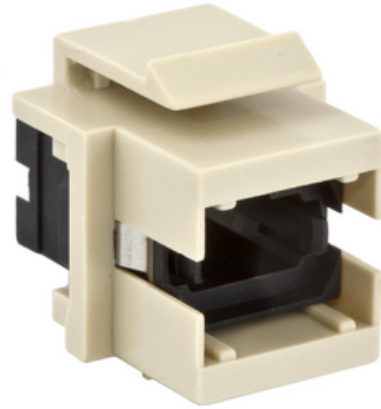




Fiber Optic Connectors, Snap-Fit, Flush, MTP-Simplex, Black, Light Almond Housing

By Hubbell Premise Wiring
Catalog Number [SFFMTPBKLA](#)

Fiber Optic Connectors, Snap-Fit, Flush, MTP-Simplex, Black, Light Almond Housing.



Features

- Snap Fit
- Lt Almond Housing
- Flush
- MPO
- Black Adapter

Application

Data Outlet

General

Color	Black
Color - Housing	Lt Almond
Environmental Conditions	Indoor
Item Type	MPO
Material	Thermoplastic
Material - Mounting Hardware	Snap-In
Mounting Type	Flush
Repeatability	0.1 dB
Service Life	500 matings
Size	.58" X .76"
Style	MPO
Sub Brand	OptiChannel
Temperature Rating	0C to 70C
UPC	662620303451

Electrical Ratings

Connectivity	Receptacle
Insertion Loss	0.75 dB

Certifications and Compliance

Industry Standard(s)	Telcordia GR-326-CORE;TIA-568-C.3;TIA-604 FOCIS-5
----------------------	---

Logistics

Carton Quantity	25
-----------------	----



A proud member of the Hubbell Family.

©2023 Hubbell Incorporated. All rights reserved.
PREM_CA-SFFMTPBKLA-SPEC-EN | REV 5/2023