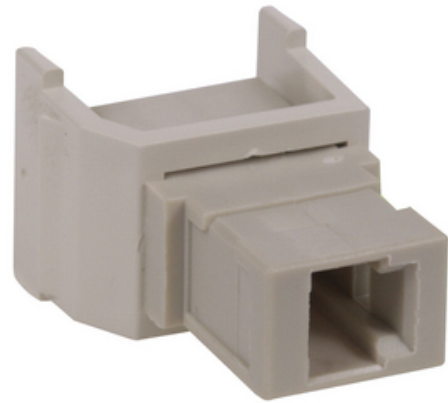




Fiber Optic Connectors, Snap-Fit, MT- RJ, Phosphor Bronze Sleeves, Light Almond Housing

By Hubbell Premise Wiring
Catalog Number [SFMTRJLA](#)



Fiber Optic Connectors, Snap-Fit, MT- RJ, Phosphor Bronze Sleeves, Light Almond Housing.

Features

- Snap Fit
- Lt Almond Housing
- Standard
- MT-RJ
- Lt Almond Adapter

Application

Data Outlet

General

Color	Lt Almond
Color - Housing	Lt Almond
EU RoHS Indicator	Yes
Enclosure Type	Various
Environmental Conditions	Indoor
Item Type	MTRJ
Material	Bronze, Phosphor
Material - Mounting Hardware	Snap-In, Keystone
Mounting Type	Standard
Repeatability	0.1 dB
Service Life	500 matings
Size	.58" X .76"
Style	MT-RJ
Sub Brand	OptiChannel
Temperature Rating	0C to 70C
UPC	662620104560

Dimensions

Display Size .58" X .76"

Electrical Ratings

Connectivity	Receptacle
Insertion Loss	0.75 dB
Return Loss	26

Conductor Related

Fiber Size 125 Micron

Certifications and Compliance

Industry Standard(s) Telcordia GR-326-CORE;TIA-568-C.3;TIA-604 FOCIS-12

Logistics

Carton Quantity 25



A proud member of the Hubbell Family.

©2023 Hubbell Incorporated. All rights reserved.
PREM_CA-SFMTRJLA-SPEC-EN | REV 5/2023