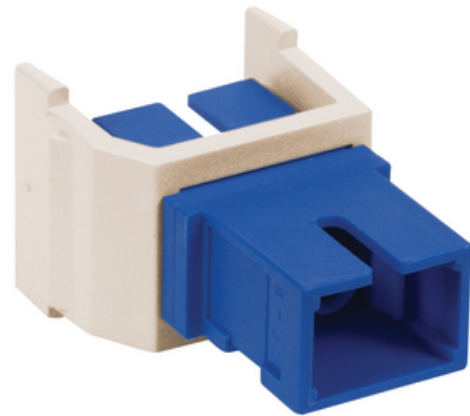




Fiber Optic Connectors, Snap-Fit, SC, Simplex, Zircon Sleeves, Red, Light Almond Housing

By Hubbell Premise Wiring
Catalog Number [SFSCSRLA](#)



Fiber Optic Connectors, Snap-Fit, SC, Simplex, Zircon Sleeves, Red, Light Almond Housing.

Features

- Snap Fit
- Lt Almond Housing
- Standard
- SC Simplex
- Red Adapter

Application

Data Outlet

General

Color	Red
Color - Housing	Lt Almond
Environmental Conditions	Indoor
Item Type	SC Simplex
Material	Ceramic
Material - Mounting Hardware	Snap-In, Keystone
Mounting Type	Standard
Repeatability	0.1 dB
Service Life	500 matings
Size	.58" X .76"
Style	SC Simplex
Sub Brand	OptiChannel
Temperature Rating	0C to 70C
UPC	662620302768

Electrical Ratings

Connectivity	Receptacle
Insertion Loss	0.75 dB

Certifications and Compliance

Industry Standard(s)	Telcordia GR-326-CORE;TIA-568-C.3;TIA-604 FOCIS-3
----------------------	---

Logistics

Carton Quantity	25
-----------------	----



A proud member of the Hubbell Family.

©2023 Hubbell Incorporated. All rights reserved.
PREM_CA-SFSCSRLA-SPEC-EN | REV 5/2023