



Category 6 XCELERATOR™ Jack

By Hubbell Premise Wiring
Catalog # [HXJ6R](#)

XCELERATOR™ Category 5e modular jacks exceed all TIA component level parameters to provide 5GBASE-T application assurance. The innovative angled QuickLace™ termination towers provide ample room for lacing, accelerating the termination.

Features

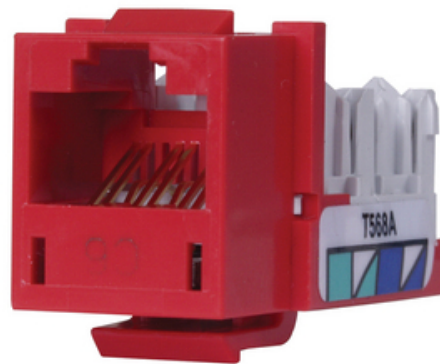
- Third Party Verified Category 6 Component Compliant
- Quick-Lace Towers Accelerate Termination
- Mating Cycles Exceed Industry Standard by Four Times

Application

Up to 5GBASE-T, 802.3bt POE

General

Color	<ul style="list-style-type: none">• Red• Rouge
Construction Material - Main Contact	Thermoplastic IDC: Phosphor Bronze with 100 Micro-Inch Tin Over Plating
Contact Point Material	Beryllium Copper with Gold Over Plating
EU RoHS Indicator	Yes
Environmental Conditions	Indoor Dry Unless Protected By Additional Means
Item Type	Modular Jack
Material - Housing	High-impact thermoplastic (UL 94V-0)
Material - Mounting Hardware	Keystone
Mounting Type	Snap-fit
Operating Cycles	2000 Plug
Performance	TIA Cat 6 Component, Third Party Verified
Series	Cat 6 UTP
Size	0.86 (22) x 0.67 (17) x 1.29 (33)
Style	RJ-45 Jack
Temperature Rating	Max Continuous- 75° C, Minimum- -40° C Without Impact
Type	<ul style="list-style-type: none">• Modular Jack• Modular Jack
UPC	662620825441



Dimensions

Display Size Standard Sized Product

Electrical Ratings

Connectivity	RJ45 Jack to IDC Punch Down
Contact Resistance	100 Ohm
Withstand Voltage	1,000 Vac @ 60 Hz

Certifications and Compliance

Industry Standard(s)	<ul style="list-style-type: none">• ANSI/TIA/EIA-568 Category 6 component• UL 1863 - Communications-Circuit Accessory• IEC60512-99-002 POE Disconnection Endurance• UL 2043 - Suitable for Air-Handling Spaces• RoHS Compliant
----------------------	--

Logistics

Carton Quantity	25
Number of Pieces in Package	1

Product Assets

[Literature - HDPJ High Density Jack Panels](#)



A proud member of the Hubbell Family.

©2024 Hubbell Incorporated. All rights reserved.
PREM_MX-HXJ6R-SPEC-EN | REV 1/2024

