

Blanco LED

Wall horizontal or vertical Mounted • Damp Location Listed **PROGRESS LED**

Description:

Enjoy this bath fixture's classic forms with crisp, contemporary updates. A silky, brushed nickel finish coats a simple backplate that anchors the light fixture in place. An elegant etched white glass shade shaped in a thin cylinder stretches horizontally across the design for a clean, modern demeanor.

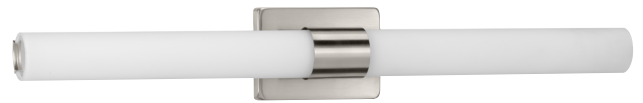
Specifications:

- Etched White glass Cylindrical Shade
- An elegant etched white glass shade shaped in a thin cylinder stretches horizontally across the design.
- A silky, brushed nickel finish coats a simple backplate that anchors the light fixture in place.
- Enjoy classic forms with crisp, contemporary updates.
- Ideal for any bathroom.
- Perfect for mid-century modern, transitional, modern, and contemporary settings.
- Measures 32-3/8-inch width by 4-3/4-inch height.
- Uses an integrated LED (53w).
- Compatible with many Triac/ELV dimmers (see dimming controls)
- Includes installation instructions and mounting hardware.
- Progress Lighting products are designed for exceptional quality, reliability, and functionality.
- Dimmable to 10% brightness (See Dimming Notes)
- Canopy covers a standard 4" recessed outlet box: 6.75 in W., 4.75 in ht., 0.75 in depth
- Mounting backplate for outlet box included
- 6 in of wire supplied
- Americans With Disabilities Act (ADA) compliant

Performance:

Number of Modules	1
Input Power	53 W
Input Voltage	120 V
Input Frequency	60 Hz
Lumens/LPW (Delivered)	2,735/51 (LM-79)
CCT	3000 K
CRI	90 CRI
Life (hours)	50000 (L70/TM-21)
EMI/RFI	FCC Title 47, Part 15, Class B
Warranty	5-year Limited Warranty
Labels	cETLus Damp Location Listed Meets California Title 24 JA8-2016

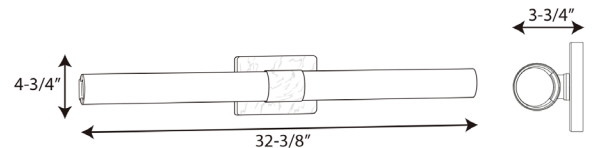
P300151-009-30



Dimensions:

Width: 32-3/8 in
Height: 4-3/4 in
Depth: 3-3/4 in
H/CTR: 2-3/8 in

Etched White glass Cylindrical Shade
Width: 32-1/4 in
Height: 2-3/8 in



P300151-009-30

Dimming Notes:

P300151-009-30 is designed to be compatible with many Triac/Forward Phase controls.

The following is a partial list of known compatible dimmer controls.

Dimming Controls:

Leviton 6672

Leviton 6674

Lutron NTEVL-300

Lutron DVELV-300P

Lutron AYCL-153P

Lutron TGCL-153-PH-WH

Dimming capabilities will vary depending on the dimmer control, load, and circuit installation.

Always refer to dimmer manufacturer instructions or a controls specialist for specific requirements.

Dimmer control brand names where identified above are trade names or registered trademarks of each respective company.