

4IN RECESSED

Ceiling joists, or in suspended ceilings Mounted • Damp Location Listed

Description:

4" Air-Tight IC New Construction Recessed Housing






Specifications:

- The housing and frame are constructed from die-formed corrosion resistant galvanized steel
- Its gasketed air-tight lamp housing prevents conditioned air from escaping into the attic space, reducing unnecessary HVAC energy usage, and the lamp housing compartment can be adjusted to fit ceiling thicknesses from ½ in. to 1 ¼ in.
- Features a universal J-box with snap-out sides and provided with push in connectors to make wiring quick and easy.
- Bar hangers have a maximum span of 24 in. and are scored in two locations for fast, clean breaking, allowing housing installation in very narrow joist spacings, and Includes pre-installed framing nails on the bar hangers, making installation quick and efficient and the hanger bars include t-bar mounting clamps for use in suspended t-grid ceilings
- The integrated temperature sensor prevents lamp overheating, allowing this fixture to be used with a range of lamp shapes and wattages
- Housing is provided with a medium base socket for a variety of bulbs - which are based on the trim used.
- The housing is compatible with a variety of trims and finishes to create different lighting effects or to easily match any decor
- CULus damp location rating makes this housing ideal for use in damp locations and IC installations
- Fully dimmable with dimmable bulbs

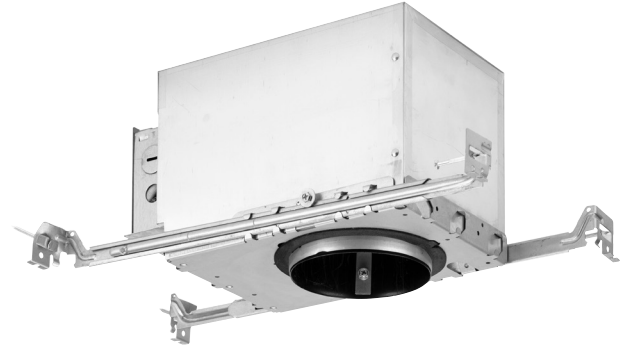
Performance:

Input Power	50 W
Input Voltage	120 VAC
Warranty	1-year Limited Warranty
Labels	cULus Damp Location Listed

Compatible housing and lamp information:

TRIM	NON IC		IC	
	LAMP SHAPE	MAX WATTS	LAMP SHAPE	MAX WATTS
 P804000-028 P804000-031 P804000-020	PAR20	50W	PAR20	50W
	R20	50W	R20	50W
 P804003-028	PAR20	35W	PAR20	35W
	R20	30W	R20	30W
 P804001-028	PAR20	50W	PAR20	50W
	R20	50W	R20	50W
	A19	40W	A19	40W
 P804002-028	PAR20	50W	PAR20	50W
	R20	50W	R20	50W
	A19	40W	A19	40W
 P804004-028	PAR20	35W	PAR20	35W

P804N-N-MD-ICAT



Dimensions:

Length: 5-7/8 in
 Width: 10-3/16 in
 Height: 6-1/4 in

Compatible LED trim information:

PAIR WITH THESE TRIMS	
	P800022-028-CS
	HS4-WH-30K9