

Raceway

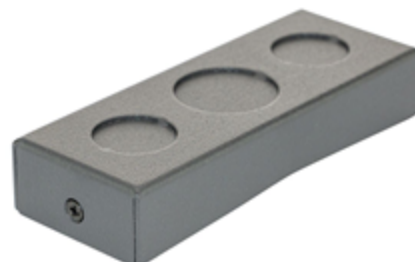
FloorTrak PRO

Installation Fitting

HUBBELL

Features

- FloorTrak PRO is the best in class solution for on-floor or in-floor installations
- Field configurable with precut sections allow for a visually seamless flow of raceway
- Divided sections allow for separation of data and power
- Available in two appealing color offerings
- Many accessories available to distribute cables from poke-thrus, power poles, conduits, raceway, and receptacles



Ordering Information

Type	Type	Color	UPC Number	Catalog Number
Fitting	Conduit Fitting	Dark Gray	783585595900	HBLFMWCF

Dimensions- inches (mm)

Height	0.9" (22)
Width	4.6" (117)
Length	1.8" (45)
Length	4.62" (117)
Width	1.78" (45)
Depth	0.88" (22)

Listings

UL listed
ADA Compliant

Specifications

Material	Steel
----------	-------

Complementary Products

6' FloorTrak PRO	HBLFMR6DG
3' FloorTrak PRO	HBLFMR3DG
6' FloorTrak PRO	HBLFMR6A
3' FloorTrak PRO	HBLFMR3A
1' FloorTrak PRO	HBLFMR1A

Online Resources

Catalog Page
eCatalog
Literature

