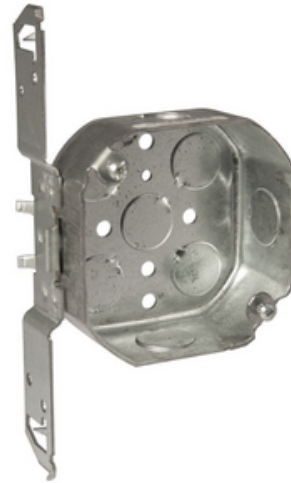




## 4 in. Octagon Box, Drawn, 1-1/2 in. Deep, Eight 1/2 in. KO's, TS Bracket

By Raco  
Catalog # 161

4 in. Octagon Box, Drawn, 1-1/2 in. Deep, Eight 1/2 in. KO's, TS Bracket



### Features

- Drawn steel construction with "TS" side-mount brackets
- 4 in.x 1-1/2 in. deep
- Supplied with eight 1/2 in. knockouts
- Combination Phillips/slotted screw heads
- 15.5 cu. in. capacity

### General

Bracket Setback	0.5
Bracket Type	TS, for Metal or Wood Studs
Ceiling Fan Rated	No
Drawn or Welded	Drawn
EU RoHS Indicator	Contact Manufacturer
Knockouts	1/2 in
Material	Steel
Size	4 in
Type	Box
UPC	050169001615
Wiring System	Conduit

### Dimensions

Actual Depth	2 in
Cubic Capacity	15.5 cu.in
Depth	1.5 in
Fixture Lbs.	50 lb
Height	7 in
Raised Ground	No
Weight	0.62 lb
Width	4 in

### Certifications And Compliance

Certified Listed	UL Listed
------------------	-----------

### Logistics

Carton Quantity	25
Packaging Type	No Packaging
Pallet Quantity	2400

### Product Assets

[Catalogs - RACO / TayMac / Bell Full Catalog](#)  
[Certifications - UL COC - E195978-17](#)  
[Certifications - UL COC - E195978- 9](#)  
[Certifications - LEED Statement](#)  
[Certifications - NEMA OS1](#)  
[Sales Drawings - 161](#)  
[Sales Drawings - RACO-drawn-steel-box-infographic](#)  
[SDS - HCC\\_SDS](#)  
[Terms and Conditions - HCC Terms & Conditions](#)



A proud member of the Hubbell Family.

©2024 Hubbell Incorporated. All rights reserved.  
RACO-161-SPEC-EN | REV 6/2024