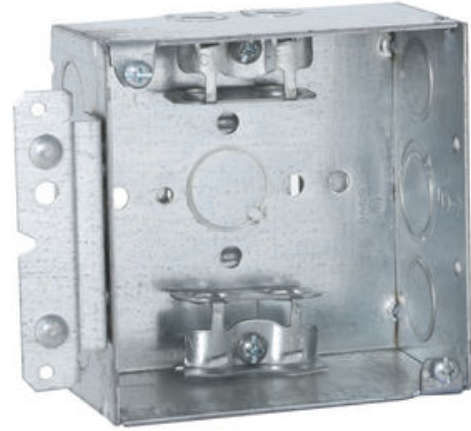




4 in. Square Box, Welded, 2-1/8 in. Deep with AC/MC/Flex Clamps, Three 1/2 in. KO's and One TKO, UBS, HM Bracket

By Raco
Catalog # 248HWP



4 in. Square Box, Welded, 2-1/8 in. Deep with AC/MC/Flex Clamps, Three 1/2 in. KO's and One TKO, UBS, HM Bracket

Features

- Welded steel construction with "UBS" support with preset bend points to work with all wall thickness 2-1/2 to 6 in. and "H" bracket that allows side-by-side mounting on stud
- 4 in. square x 2-1/8 in. deep
- BX clamps provided for steel & alum armored cable, MCI cable, MCI-A cable, and flexible metal conduit
- TKO® Knockouts allow for design and installation flexibility
- Supplied with three 1/2 in. and one 1/2-3/4 in. TKO® knockouts
- Combination Phillips/slotted screw heads
- 30.3 cu. in. capacity
- Acceptable for use in 2-hour fire rated walls

General

Bracket Setback	0.375
Bracket Type	H, for Metal or Wood Studs
Drawn or Welded	Welded
EU RoHS Indicator	Contact Manufacturer
Fire Resistance	Yes
Knockouts	1/2 in; 1/2 - 3/4 in Combination (TKO)
Material	Steel
Type	Box
UPC	050169502488
Wiring System	Armored Cable/Metal Clad/MCI-A/Flex

Dimensions

Actual Depth	2.75 in
Cubic Capacity	30.3 cu.in
Depth	2.125 in
Height	4 in
Raised Ground	No
Weight	0.958 lb
Width	4.915 in

Certifications And Compliance

Certified Listed UL Listed

Logistics

Carton Quantity	25
Packaging Type	No Packaging
Pallet Quantity	1375

Product Assets

[Catalogs - RACO / TayMac / Bell Full Catalog](#)
[Certifications - LEED Statement](#)
[Certifications - NEMA OS1](#)
[Sales Drawings - 248HWP](#)
[Sales Drawings - RACO-welded-steel-box-infographic](#)
[SDS - HCC SDS](#)
[Terms and Conditions - HCC Terms & Conditions](#)



A Hubbell brand

©2024 Hubbell Incorporated. All rights reserved
RACO-248HWP-SPEC-EN | REV 6/2024