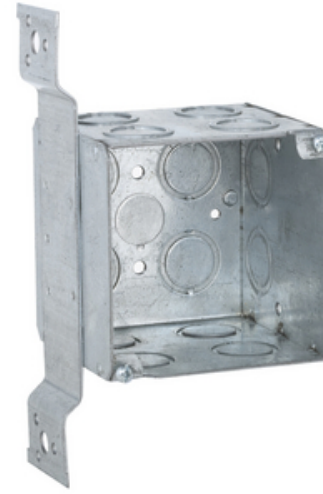




## 3-3/4 in. Square Box, Large capacity, Welded, 3-1/2 in. Deep, Fifteen Knockouts, FM Bracket

By Raco  
Catalog # 255

3-3/4 in. Square Box, Large capacity, Welded, 3-1/2 in. Deep, Fourteen 1/2 and 3/4 in. Concentric KO's, FM Bracket.



\*Representative Image

### Features

- Welded steel construction with "FM" bracket that mounts on flat side of stud
- 3-3/4 in. square x 3-1/2 in. deep
- 3-3/4 in. opening in walls allows for margin of error when using a 4 in. square cover
- Accepts 4 in. square covers and mud rings
- Large capacity design accommodates oversized devices
- Supplied with fourteen 1/2-3/4 in. Concentric KO's and one 1/2 in. KO
- 40.5 cu. in. capacity
- Acceptable for use in 2-hour fire rated walls

### General

Bracket Setback	1.25
Bracket Type	FM, for Metal or Wood Studs
Color	Gray
Drawn or Welded	Welded
EU RoHS Indicator	Contact Manufacturer
Fire Resistance	Yes
Knockouts	1/2 in;1/2 - 3/4 in Concentric
Material	Steel
Number of Gang(s)	2-Gang
Type	Box
	Large Capacity
UPC	050169002551
Wiring System	Conduit

### Dimensions

Actual Depth	3.5 in
Cubic Capacity	45 cu.in
Depth	3.5 in
Height	7.625 in
Raised Ground	No
Weight	1.426 lb
Width	4.125 in

### Certifications And Compliance

Certified Listed                      UL Listed

### Logistics

Carton Quantity	10
Packaging Type	No Packaging
Pallet Quantity	600

### Product Assets

[Catalogs - RACO / TayMac / Bell Full Catalog](#)  
[Certifications - UL COC - E195978-9](#)  
[Sales Drawings - RACO-welded-steel-box-infographic](#)  
[SDS - HCC SDS](#)  
[Sell Sheets - Large Capacity Steel Wall Boxes](#)  
[Terms and Conditions - HCC Terms & Conditions](#)



A Hubbell brand

©2024 Hubbell Incorporated. All rights reserved  
RACO-255-SPEC-EN | REV 6/2024