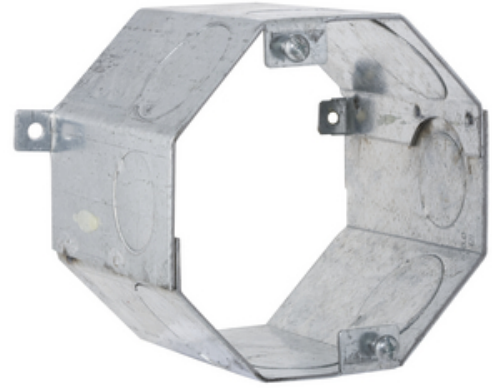




Concrete Ring, Welded, 3-1/2 in. Deep, Single Row 3/4 in. & 1 in. KO's

By Raco
Catalog # 278



Concrete Ring, Welded, 3-1/2 in. Deep, Single Row 3/4 in. & 1 in. KO's

Features

- Flat sides provide excellent contact for locknuts
- External ears are used to nail the ring to the wood form
- Top cover is removable for before-pour work
- Ears on inside of box are for fixtures
- Waxed fixture ears prevent concrete from interfering with the threads
- A variety of covers are available
- Cover plate must be ordered separately with all RACO® concrete rings

General

Drawn or Welded	Welded
EU RoHS Indicator	Contact Manufacturer
Knockouts	3/4 in;1 in
Material	Steel
Type	Concrete Ring
UPC	050169002780
Wiring System	Conduit

Dimensions

Cubic Capacity	43 cu.in
Depth	3.5 in
Fixture Lbs.	50 lb
Height	4 in
Weight	0.906 lb
Width	4 in

Certifications And Compliance

Certified Listed	UL Listed
------------------	-----------

Logistics

Carton Quantity	20
Packaging Type	No Packaging
Pallet Quantity	1100

Product Assets

[Catalogs - RACO / TayMac / Bell Full Catalog](#)
[Certifications - UL COC - E195978-18](#)
[Certifications - LEED Statement](#)
[Certifications - NEMA OS1](#)
[Certifications - UL COC - E195978- 3](#)
[SDS - HCC SDS](#)
[Terms and Conditions - HCC Terms & Conditions](#)



A Hubbell brand

©2024 Hubbell Incorporated. All rights reserved
RACO-278-SPEC-EN | REV 6/2024