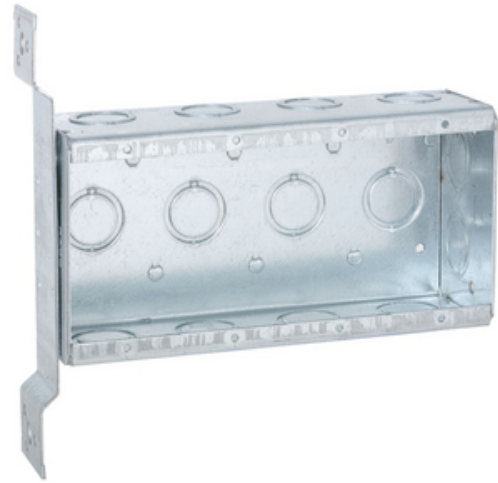




## 4-Gang Switch Box, Welded, 2-1/2 in Deep Fourteen 1/2 and Fourteen 3/4 in. KO's

By Raco  
Catalog # [687](#)

4-Gang Switch Box, Welded, 2-1/2 in Deep Fourteen 1/2 and Fourteen 3/4 in. KO's



### Features

- Reference the Box Selection section in the front of this catalog for complete description of bracket types and features.
- Supplied with sixteen (16) 1/2 and 3/4 in. concentric knockouts
- Welded steel construction with "FM" bracket - 1/2 in. set back
- Standard device spacing with tapped 6-32 holes for devices
- Uses Raco 971 voltage partition
- 63.5 cu. in. capacity

### General

Bracket Setback	0.5
Bracket Type	FM, for Metal or Wood Studs
Color	Gray
Drawn or Welded	Welded
EU RoHS Indicator	Contact Manufacturer
Knockouts	1/2 in;3/4 in
Material	Steel
Number of Gang(s)	4-Gang
Type	<ul style="list-style-type: none"><li>• Box</li><li>• Large Capacity</li></ul>
UPC	050169006870
Wiring System	Conduit

### Dimensions

Cubic Capacity	63.5 cu.in
Depth	2.5 in
Height	7.625 in
Weight	1.654 lb
Width	7.625 in

### Certifications And Compliance

Certified Listed	UL Listed
------------------	-----------

### Logistics

Carton Quantity	10
Packaging Type	No Packaging
Pallet Quantity	600

### Product Assets

[Catalogs - RACO / TayMac / Bell Full Catalog](#)  
[Certifications - UL COC - E195978-9](#)  
[Sales Drawings - RACO-welded-steel-box-infographic](#)  
[SDS - HCC\\_SDS](#)  
[Terms and Conditions - HCC Terms & Conditions](#)



A proud member of the Hubbell Family.

©2024 Hubbell Incorporated. All rights reserved.  
RACO-687-SPEC-EN | REV 6/2024