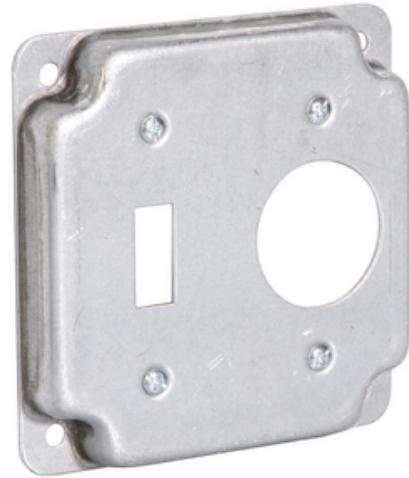




## 4 in. Square Cover, Exposed Work, Toggle Switch/1.406 in. dia. Receptacle

By Raco  
Catalog # 805C

4 in. Square Cover, Exposed Work, Toggle Switch/1.406 in. dia. Receptacle



### Features

- RACO® exposed work covers include required hardware for mounting the receptacle(s)
- RACO® exposed work covers meet the requirements of the 2014 NEC Article 250.146(A). No bonding jumper is required for covers with: (1) Crushed corners
- Hardware and cover are packed in a poly-bag with printed catalog number, compliances and installation instructions
- cULus Listed

### General

Catalog Number	805C
EU RoHS Indicator	Contact Manufacturer
Material	805C
Paintable/Stainable	No
Type	Exposed Cover
UPC	050169999790

### Dimensions

Cubic Capacity	6.5 cu.in
Dimensions	0.563 in x 4.125 in x 4.125 in
Height	4.125 in
Length	0.563 in
Raised Height	0.5 in
Weight	0.422 lb
Width	4.125 in

### Certifications And Compliance

Certified Listed	cULus Listed
------------------	--------------

### Logistics

Carton Quantity	10
Minimum Pack Quantity	10
Packaging Type	Polybag
Pallet Quantity	3780

### Product Assets

[Catalogs - RACO / TayMac / Bell Full Catalog](#)  
[Installation Manuals - RACO Crushed Corners Covers Instruction Sheet](#)  
[Product Logo - CrushCorner](#)  
[Sales Drawings - 805C Customer Drawing](#)  
[SDS - HCC SDS](#)  
[Sell Sheets - Exposed Work Covers](#)  
[Terms and Conditions - HCC Terms & Conditions](#)  
[Video - RACO Crushed Corner Exposed Work Covers Review & Installation](#)



A Hubbell brand

©2024 Hubbell Incorporated. All rights reserved  
RACO-805C-SPEC-EN | REV 6/2024