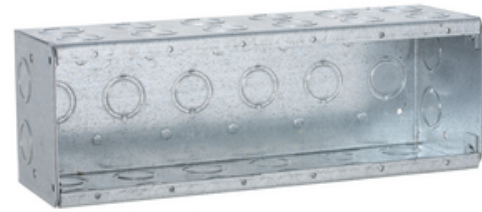




6-Gang Masonry Box, Nongangable, 3-1/2 in. Deep, Forty-Six Concentric KO's

By Raco
Catalog # 965



6-Gang Masonry Box, Nongangable, 3-1/2 in. Deep, Forty-Six Concentric KO's

Features

- Rugged welded design does not fall apart during construction.
- Available from one to six gang configurations in both 2-1/2" and 3-1/2" depths.
- Rectangular shape fits square cuts in block.
- Large volume design allows for additional work room inside the box.
- Standard 1/2" and 3/4" concentric knockouts.
- Device ears inside the box prevent mortar from getting in the device holes.
- Steel voltage partition #971 fits all 2-1/2" or 3-1/2" depths.
- Standard wall plates can be used.

General

Bracket Type	No Bracket
Catalog Number	965
Drawn or Welded	Welded
EU RoHS Indicator	Contact Manufacturer
Gangable	No
Knockouts	1/2 - 3/4 in Concentric
Material	Steel
Number of Gang(s)	6-Gang
Type	Box
UPC	050169009659
Wiring System	Conduit

Dimensions

Actual Depth	3.563 in
Cubic Capacity	134 cu.in
Depth	3.5 in
Height	3.375 in
Weight	2.9 lb
Width	11.031 in

Certifications And Compliance

Certified Listed	UL Listed
------------------	-----------

Logistics

Carton Quantity	1
Pallet Quantity	256

Product Assets

[Catalogs - RACO / TayMac / Bell Full Catalog](#)
[Certifications - UL COC - E195978-21](#)
[Sales Drawings - 965 Customer Drawing](#)
[SDS - HCC SDS](#)
[Terms and Conditions - HCC Terms & Conditions](#)



A Hubbell brand

©2024 Hubbell Incorporated. All rights reserved
RACO-965-SPEC-EN | REV 6/2024