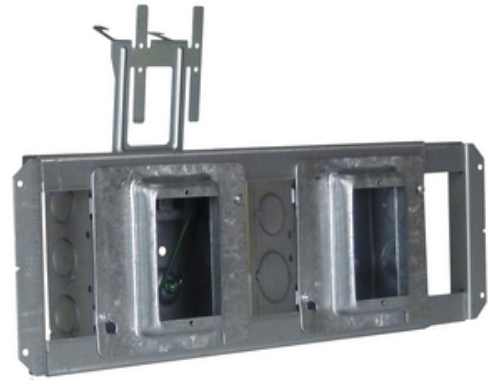




**STAB-iT® Pre-Fab Assembly,
9020R model + 252SCM model +
265 + (2) 838 model / 1G - Mud
Ring, Raised 3/4" / 16" Studs**

By Raco
Catalog # [AW3.1.16](#)



STAB-iT® Pre-Fab Assembly, 9020R model + 252SCM model +
265 + (2) 838 model / 1G - Mud Ring, Raised 3/4" / 16" Studs

Features

- Ready to install, no preparation required
- For use on wood or metal studs
- Designed and assembled in USA

General

Application Save labor costs on any job with RACO Pre-Fab assemblies. All components come pre-assembled, ready to install right out of the box. Electrical boxes, mounting brackets, cable management and mud rings. Ensure quality while reducing material and labor costs. Even reduce jobsite packaging waste.

These Assemblies feature 4-11/16" boxes with integrated STAB-iT® II connectors for advanced fast, secure installation of MC cables. Contractor-proven to install MC in just 1/3 the time! These boxes also include built-in cable management clip and 8" solid #12 pigtail. Models with a second box for power and data applications include a standard 4-11/16" box with additional knockouts.

Cable Clamps	1
Drawn or Welded	Welded
Knockouts	(1) 1/2", (10) 1/2 - 3/4" TKO, (1) 3/4 - 1" TKO
Material	Steel
Number of Gang(s)	1-Gang
UPC	050169993330
Wiring System	Flex

Dimensions

Cubic Capacity	42
Raised Ground	Yes
Raised Height	0.75 in

Certifications And Compliance

Certified Listed	UL Listed
------------------	-----------

Logistics

Carton Quantity	6
Pallet Quantity	180

Product Assets

[Brochures - Product Solutions for Electrical Prefabrication](#)
[Catalogs - RACO / TayMac / Bell Full Catalog](#)
[Installation Manuals - Instructions for AW Series 4-11/16" STAB-IT II Box Assemblies](#)
[Installation Manuals - EP-RACO-CC-IOM-EN-00353 web](#)
[Sell Sheets - RA_448_SEL_PREFAB](#)
[Sell Sheets - 4-11/16" STAB-iT II Box Assemblies for Pre-Fab](#)



A Hubbell brand

©2024 Hubbell Incorporated. All rights reserved
RACO-AW3116-SPEC-EN | REV 6/2024