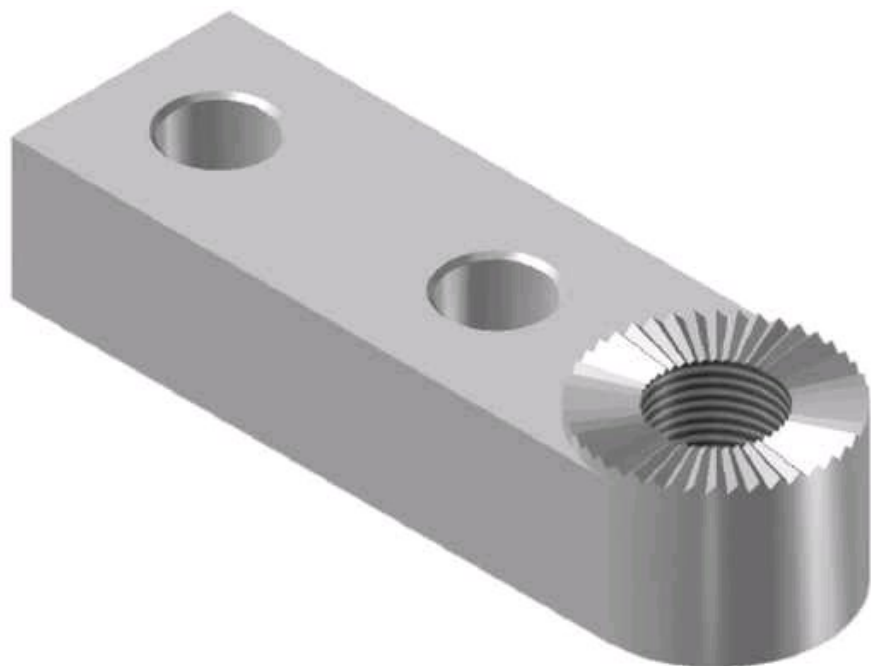


RL-ADE

by CMC
Catalog ID: RL-ADE



ROTO-LUG® connectors have the built-in Turning Point rotational feature that allows up to 219° positioning in all directions: front-and-back and side-to-side. The built-in rotation feature significantly reduces installation time and the amount of conductor needed as it allows the installer to bring the connector to the conductor by quickly adjusting the angle of the connector to accommodate the conductor.

Product Details

General

Type	Bolted Lugs & Terminals
UPC	192663020409