

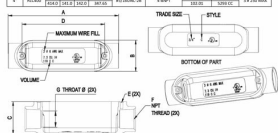
RIGID BODIES AND ASSEMBLIES

C Assembly
N/A

C13



TRADE	CONDUIT	A	B	C	D	E TAPPED	F HOLE	G THREADED	H HOLE	VOLUME	WEIGHT
3/8"	ALUMINUM	2.12	1.10	1.36	3.50	1.12	0.125	0.125	0.125	4.3	0.15
1/2"	ALUMINUM	2.50	1.34	1.36	3.50	1.12	0.125	0.125	0.125	4.3	0.15
3/4"	ALUMINUM	2.87	1.34	1.36	3.50	1.12	0.125	0.125	0.125	4.3	0.15
1"	ALUMINUM	3.25	1.34	1.36	3.50	1.12	0.125	0.125	0.125	4.3	0.15
1 1/2"	ALUMINUM	4.00	1.34	1.36	3.50	1.12	0.125	0.125	0.125	4.3	0.15
2"	ALUMINUM	4.75	1.34	1.36	3.50	1.12	0.125	0.125	0.125	4.3	0.15
2 1/2"	ALUMINUM	5.50	1.34	1.36	3.50	1.12	0.125	0.125	0.125	4.3	0.15
3"	ALUMINUM	6.25	1.34	1.36	3.50	1.12	0.125	0.125	0.125	4.3	0.15
3 1/2"	ALUMINUM	7.00	1.34	1.36	3.50	1.12	0.125	0.125	0.125	4.3	0.15
4"	ALUMINUM	7.75	1.34	1.36	3.50	1.12	0.125	0.125	0.125	4.3	0.15



Catalog #: RLC050

APPLICATIONS

For use with threaded rigid/IMC conduit for pulling access or to split a run into multiple directions. Removable cover allows access for maintenance and making taps and splices to conductors.
N/A

PRODUCT FEATURES

- Durable die cast aluminum construction
- Premium powder coat finish
- Includes NBR synthetic rubber gasket
- Stamped aluminum cover
- Combination head screw

UL LISTED

File E331564

NEMA

NEMA 3R rated

NEC

2014 NEC® compliant

GENERAL PRODUCT INFORMATION

Trade Size: 1/2 in.

DRAWING DIMENSIONS

- Dimension A: 4.72 in.
- Dimension B: 1.34 in.
- Dimension C: 1.36 in.
- Dimension D: 3.50 in.
- Dimension E: Tapped holes #8-32UNC-2B
- Thread Spec. F: 1/2-14NPT
- Dimension G: .612 in.

PRODUCT MEASUREMENTS

Cubic Inches (cm3): 4.3 (70.5)

PACKAGING

- Package Type: Carton
- Ship Carton Qty.: 5
- Product UPC-A Labeled: Yes
- Weight (Lbs. Per/C): 29.00
- Ship Carton Length (in.): 5.00
- Ship Carton Width (in.): 3.75
- Ship Carton Height (in.): 5.50
- Ctn Weight (Lbs.): 1.45
- UPC Number: 092326211970
- I2of5: 30092326211971