

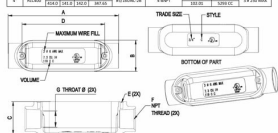
RIGID BODIES AND ASSEMBLIES

C Assembly
N/A

C13



TRADE	CONDUIT	A	B	C	D	E TAPPED	F TAP	G THREAD (IN)	VOLUME	WEIGHT
3/8"	ALUMINUM	2.12	1.56	1.63	4.125	1.125	1.125	1/2-14NPT	7.3	1.1
1/2"	ALUMINUM	2.51	1.71	1.88	4.875	1.375	1.375	3/4-16NPT	11.2	1.6
3/4"	ALUMINUM	2.89	1.96	2.13	5.625	1.575	1.575	1-18NPT	15.1	2.1
1"	ALUMINUM	3.28	2.21	2.38	6.375	1.775	1.775	1 1/4-20NPT	19.0	2.7
1 1/4"	ALUMINUM	3.66	2.46	2.63	7.125	1.975	1.975	1 1/2-22NPT	22.9	3.3
1 1/2"	ALUMINUM	3.84	2.56	2.73	7.375	2.075	2.075	1 3/4-24NPT	24.8	3.6
2"	ALUMINUM	4.41	2.94	3.11	8.375	2.375	2.375	2-28NPT	32.6	4.7
2 1/2"	ALUMINUM	5.00	3.32	3.49	9.375	2.675	2.675	2 1/2-32NPT	36.5	5.3
3"	ALUMINUM	5.58	3.70	3.87	10.375	2.975	2.975	3-36NPT	40.4	5.9
3 1/2"	ALUMINUM	6.17	4.08	4.25	11.375	3.275	3.275	3 1/2-40NPT	44.3	6.5
4"	ALUMINUM	6.75	4.46	4.63	12.375	3.575	3.575	4-44NPT	48.2	7.1



Catalog #: RLC075

APPLICATIONS

For use with threaded rigid/IMC conduit for pulling access or to split a run into multiple directions. Removable cover allows access for maintenance and making taps and splices to conductors.
N/A

PRODUCT FEATURES

- Durable die cast aluminum construction
- Premium powder coat finish
- Includes NBR synthetic rubber gasket
- Stamped aluminum cover
- Combination head screw

UL LISTED

File E331564

NEMA

NEMA 3R rated

NEC

2014 NEC® compliant

GENERAL PRODUCT INFORMATION

Trade Size: 3/4 in.

DRAWING DIMENSIONS

- Dimension A: 5.51 in.
- Dimension B: 1.56 in.
- Dimension C: 1.63 in.
- Dimension D: 4.125 in.
- Dimension E: Tapped holes #8-32UNC-2B
- Thread Spec. F: 3/4-14NPT
- Dimension G: .814 in.

PRODUCT MEASUREMENTS

Cubic Inches (cm³): 7.3 (119.6)

PACKAGING

- Package Type: Carton
- Ship Carton Qty.: 5
- Product UPC-A Labeled: Yes
- Weight (Lbs. Per/C): 40.00
- Ship Carton Length (in.): 5.13
- Ship Carton Width (in.): 4.00
- Ship Carton Height (in.): 6.13
- Ctn Weight (Lbs.): 2.00
- UPC Number: 092326211987
- I2of5: 30092326211988