

LED Wall Indirect SAE103

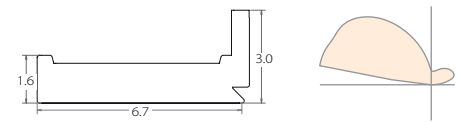
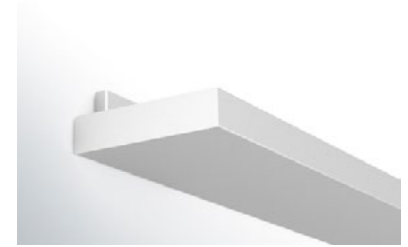
Fixture Type:

Project Name:

Ordering Guide

| Feature | Code | Options | Description |
|--|------|---------|---|
| Program | | SAE | SAE Program |
| Series | | 103 | 103 LED Wall Indirect |
| Mounting | | W | Wall Mount |
| Fixture Distribution | | I | Indirect |
| Uplight Distribution | | LPA | Low Peak Angle |
| Row Length (in feet) | | —' | Enter in foot increments. Note fixture lengths below |
| Max length in row | | 03 | 3'; 914mm |
| | | 04 | 4'; 1219mm |
| | | 06 | 6'; 1829mm |
| | | 08 | 8'; 2438mm |
| Finish/Color | | C1 | Matte White |
| | | CC | Custom Color* *see page 3 for details |
| Color Temperature | | 27K | 2700K |
| | | 30K | 3000K |
| | | 35K | 3500K |
| | | 40K | 4000K |
| | | 50K | 5000K+ |
| | | 27K9 | 2700K, 90 CRI+ |
| | | 30K9 | 3000K, 90 CRI |
| | | 35K9 | 3500K, 90 CRI |
| | | 40K9 | 4000K, 90 CRI |
| | | 50K9 | 5000K, 90 CRI+ |
| | | 2230TD | 2200K-3000K SpectraSync™ Dim to Warm* |
| | | 2750T | 2700K-5000K SpectraSync™ Tunable White* |
| | | 2765T | 2700K-6500K SpectraSync™ Tunable White* *Must be ordered with D05 or DS5 Driver options; excludes 2' and 3' lengths |
| Output/ft (specifiable in 50 lumens/ft increments) | | I055 | 550 (min) |
| | | I140 | 1400 (max) |

* Additional lead time may be applicable. Contact factory.



Key Features:

- Variable Intensity technology provides a range of specifiable outputs and resulting fixture wattages
- 100% indirect distribution
- 2 SDCM color variation
- 120 degree peak angle

Performance

| Nomenclature | Lumens/ft | W/ft | Efficacy |
|--------------|-----------|------|----------|
| I055 (min) | 550 | 4.3 | 127 |
| I060 | 600 | 4.7 | 130 |
| I065 | 650 | 5.0 | 129 |
| I070 | 700 | 5.5 | 127 |
| I075 | 750 | 5.9 | 127 |
| I080 | 800 | 6.4 | 124 |
| I085 | 850 | 7.0 | 121 |
| I090 | 900 | 7.5 | 121 |
| I095 | 950 | 7.8 | 121 |
| I100 | 1000 | 8.2 | 122 |

(wattage may vary up to 5% from published)



Quick Find litecontrol.com

SAE103

LED Wall Indirect SAE103

Ordering Guide (continued)

| Driver | | NDM | Non Dimming |
|-------------------|------|---------|---|
| | | D05 | 5% Dimming, 0-10V* |
| | | DS5 | Soft-Start 5% Dimming, 0-10V* |
| | | D01 | 1% Dimming, 0-10V |
| | | DS1 | Soft-Start 1% Dimming, 0-10V |
| | | D00 | Dim-to-off (1%), 0-10V |
| | | DS0 | Soft-Start Dim-to-off (1%), 0-10V |
| | | LEC | Hi-lume 1% EcoSystem LED driver |
| | | DALI | DALI* |
| Circuiting | | DALIP | Powered DALI (2.0)* *Must be ordered with 2230TD, 2750T or 2765T option |
| | | 1C | 1 Circuit |
| Voltage | | UNV | Universal Voltage |
| | | 120 | 120 Volt |
| | | 277 | 277 volt |
| | | 347 | 347 Volt** *Excludes Emergency Battery Pack 'EF' Option. Excludes DALI, DALIP and Lutron (LTW/LEC) Dimming Drivers |
| | | | |
| Optional Features | Code | Options | Description |
| Nightlight | | _NL | Nightlight Circuit Required. Enter quantity. 2NL= 2 nightlight circuits/row |
| Emergency | | _BLP1 | Bodine BSL310LP.* Indicate how many in the row. Example: 2BLP1 = 2 Emergency batteries/row. *3 ft not available |
| Thru-wiring | | W1 | No Thru Wire |
| | | W2 | Provide Normal and Emergency Thru Wiring* |
| | | W3 | Provide Normal Thru Wiring Only *Only applicable when specified with emergency |
| Dust Cover | | L1 | Clear Acrylic Dust Cover Lens |
| Control Options | Code | Options | Description |
| NX** | | NXE | NX Enabled, Dual SmartPorts |
| | | NXWE | NX Wireless Enabled |
| | | NXES | NX Enabled, Dual SmartPorts, PIR Occupancy Sensor, Dimming Daylight Harvesting |
| | | NXS | NX Enabled, PIR Occupancy Sensor, Dimming Daylight Harvesting (standalone) |
| | | NXSW | NX Wireless, PIR Occupancy Sensor, Dimming Daylight Harvesting |
| | | NXWD | NX Wireless Enabled, Dual SmartPORTs |
| | | NXSWD | NX Wireless, PIR Occupancy Sensor, Dimming Daylight Harvesting, Dual SmartPORTs *Not available for row mounting; Only available with 0-10V Driver options; Contact factory for Length restrictions |
| | | | |
| Sensors* | | _SD1 | Daylight Sensor Required. Enter quantity. 2SD1= 2 daylight sensors/row |

* Additional lead time may be applicable. Contact factory.

 **Quick Find** litecontrol.com

SAE103

LED Wall Indirect SAE103

Details

Construction:

20 gauge formed steel housing. Adjustable for easy leveling (see instruction sheet for details).

Distribution:

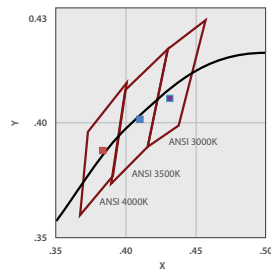
100% indirect.

Finish/Color:

Visit www.litecontrol.com/finishes for details.
CC- Customer Colors may be subject to extended lead times.

Color Temperature:

27K-2700K output multiplier (0.95)
30K-3000K output multiplier (0.98)
35K-3500K output multiplier (1.00)*
40K-4000K output multiplier (1.03)
50K-5000K output multiplier (1.05)
27K9-2700K 90 CRI output multiplier (0.83)
30K9-3000K 90 CRI output multiplier (0.85)
35K9-3500K 90 CRI output multiplier (0.88)
40K9-4000K 90 CRI output multiplier (0.90)
50K9-5000K 90 CRI output multiplier (0.93)
*Scale all values from 35K



Color Variation:

2 step MacAdam ellipse

Output (VI technology):

Variable Intensity (VI) technology allows precise specification of fixture output/wattage. Fixture will be programmed and labeled to specification. See output section for available increments.

Output:

Specify in 50 lumens increments/ft within the below range:

| | Lumens/ft | Nomenclature |
|------|-----------|--------------|
| Min: | 550 | I055 |
| Max: | 1400 | I140 |

Driver:

NDM: Non-dimming. Fixture will be wired for fixed light output.
D05: Osram 100%-5% dimming range. Fixture will be wired for low voltage 0-10V dimming control. Only applicable if either 2230TD, 2750T or 2765T is selected.
DS5: Soft-Start 100%-5% dimming range. Fixture will be wired for low voltage 0-10V dimming control. Only applicable if either 2230TD, 2750T or 2765T is selected.
D01: 100%-1% dimming range. Fixture will be wired for low voltage 0-10V dimming control.
DS1: Soft-Start 100%-1% dimming range. Fixture will be wired for low voltage 0-10V dimming control.
D00: Dim-to-off 100%-1% Dimming range. Fixture will be wired for low voltage 0-10V dimming control.
DS0: Soft-Start Dim-to-off 100%-1% dimming range. Fixture will be wired for low voltage 0-10V dimming control.
LEC: Hi-Lume 1% EcoSystem LED Driver with Soft-on, Fade-to-Black dimming technology
DALI: DALI Compatible.
DALIP: Self-Powered DALI bus (e.g. SR, DEXAL)

Circuiting:

1C (1 Circuit) Fixture wired for a single circuit.

Thru wiring:

See separate LC-Thruwire spec sheet for additional details.

NX Distributed Intelligence: **NX DISTRIBUTED INTELLIGENCE**

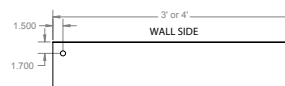
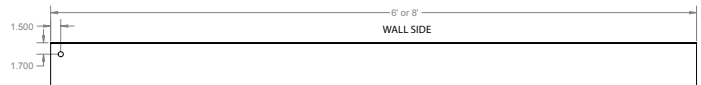
Supports indoor and outdoor applications, wired, wireless and hybrid networked NX lighting control deployments and enables emerging applications such as Hubbell Lighting's SpectraSync™ color tuning technology.

See separate [NX™ Application Guide](#) for additional details.

See Hubbell Controls Solution [NX Brochure](#).

Sensors:

SD1: Daylight sensor only (Wattstopper part# FD301).
NX: See separate [Control Options Guide](#) for additional details.



SpectraSync™ Color Tuning Technology: **SpectraSync™**

Control your space based on the needs of the application, specific activities throughout the day and preferences of the occupants with two distinct SpectraSync™ Color Tuning Technology.

Dim to Warm: Dim to Warm mimics the familiar warming effect that occurs with traditional incandescent sources as they are dimmed. (Available with 2200K-3000K).
Tunable White: Tunable White offers users the ability to tailor CCT to their personal preference, enhancing task visibility, material and colors or the aesthetics of the space. (Available with 2700K-5000K or 2700K-6500K).

See separate [SpectraSync™ Tech Sheet](#) for additional details.

See separate [NX™ Solutions Guide](#) for additional details.

LED Wall Indirect SAE103

Details

Dust cover:

Available. Clear acrylic.

Row joining:

Integral end headers with captive nuts and 1/4-20 machine screws (provided) are accessible without removal of any components.

End caps:

Steel, flat-style. Attach with same method as row joining.

Nightlight:

See separate LG-Nightlight spec sheet for additional details.

Emergency:

Integral-Bodine BSL310LP
Inverter-Compatible. Provided by others.

Field accessibility:

LED boards and drivers can be accessed and removed from above fixture, while installed. LED boards can be replaced either individually or as part of 4' module.

Fixture weight:

2.5 lbs/ft.

Ratings:

CSA listed for damp locations. IBEW. AF of L. Non-ADA compliant.

Warranty:

LED boards-5 years
LED drivers (standard)-5 years
LED drivers (Lutron)-3 years

CRI: 80 minimum

| CCT | CRI | R1 | R2 | R3 | R4 | R5 | R6 | R7 | R8 | R9 | R10 | R11 | R12 | R13 | R14 | R15 |
|-----|-----|----|----|----|----|----|----|----|----|----|-----|-----|-----|-----|-----|-----|
| 30K | 83 | 81 | 90 | 96 | 81 | 81 | 86 | 84 | 62 | 12 | 75 | 80 | 68 | 83 | 98 | 75 |
| 35K | 83 | 81 | 88 | 94 | 82 | 81 | 84 | 86 | 65 | 14 | 72 | 80 | 63 | 82 | 96 | 75 |
| 40K | 83 | 82 | 90 | 95 | 81 | 81 | 85 | 87 | 66 | 14 | 75 | 79 | 59 | 84 | 97 | 76 |

Rated Life (LED Board):

Tested in accordance to LM79-2008
L70: 287,000 (per TM-21 extrapolated curve)
L70: >61,000 (per TM-21/LM80 6x's limitation)
L90: 74,000 (per TM-21 extrapolated curve)

Rated Life (Driver):

Standard = 100,000 hours
Lutron = 50,000 hours

LED Wall Indirect SAE103

Photometry

Fixture: SAE103-W-I-LPA-04-04-SGL-CX-35K-I075

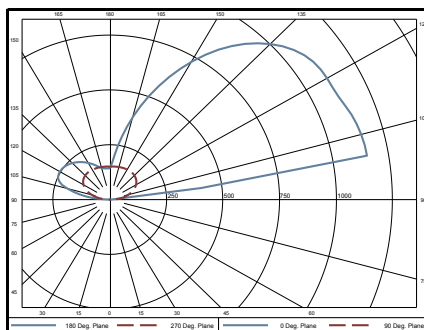
CCT: 3500K

Output: I075

Nominal lumens: 750 lumens/ft

Efficacy: 133 lm/W

Test report: SAE103-W-I-LPA-04-04-SGL-CX-35K-I075



| Zonal Lumens | | |
|--------------|--------|--------|
| Zone | Lumens | Lamp % |
| 90-180 | 3000 | 100% |