



SLED

HIGH EFFICIENCY LINEAR LED FACADE FIXTURE

DATE:	LOCATION:
TYPE:	PROJECT:
CATALOG #:	

FEATURES

- The SLED Linear LED Lighting System offers a discrete and minimalist design to maximize the lighting effect for marketing your building as your brand while keeping energy usage and maintenance to a minimum.
- Thanks to its intuitive “plug and play” mounting design with integral driver system, installation is quick and simple and only requires that power be brought to one fixture in each continuous row.
- The unique fixture design and the long life Mid-Power LED source minimizes maintenance to only an occasional cleaning of outer lens surfaces.
- This successful system is truly a “set it and forget it” solution that is only offered from Security Lighting



SPECIFICATIONS

CONSTRUCTION

- Powder-coated mounting brackets that conceal power cables
- Fixture to fixture connections are made external to the fixture

OPTICS

- 5000K color temp standard
- Tempered glass lens
- Down only full cut off

INSTALLATION

- Each order ships with a formed drilling template for accurate and quick installation
- All subsequent fixtures quickly plug together in series
- Fixtures are not opened during the installation process
- Complete instructions for fixture installation posted on web site at www.securitylighting.com

ELECTRICAL

- Fully integrated driver for completely self-contained lighting system
- Power feed required only at beginning of each continuous row or stand alone fixture

WARRANTY

- 5 year warranty
- See [HLI Standard Warranty](#) for additional information

ORDERING GUIDE

Example: S-LED-XX-DO-U-XX-XX

CATALOG #

S	LED	HE		DO	U		
Series	Source	Type	Size	Distribution	Voltage	Finish	Options
S Linear Facade Fixture	LED Mid-Powered	HE High Efficiency	48 4-foot 36 3-foot 24 2-foot	DO Downlight Only (8.5 Watts per foot)	U Universal 120 to 277 Volt	PS Platinum Silver DB Dark Bronze WH White BK Black IO Iron Ore RL RAL Color ¹⁴	3K 3000K color temp ⁵ 4K 4000K color temp ⁵

Notes:

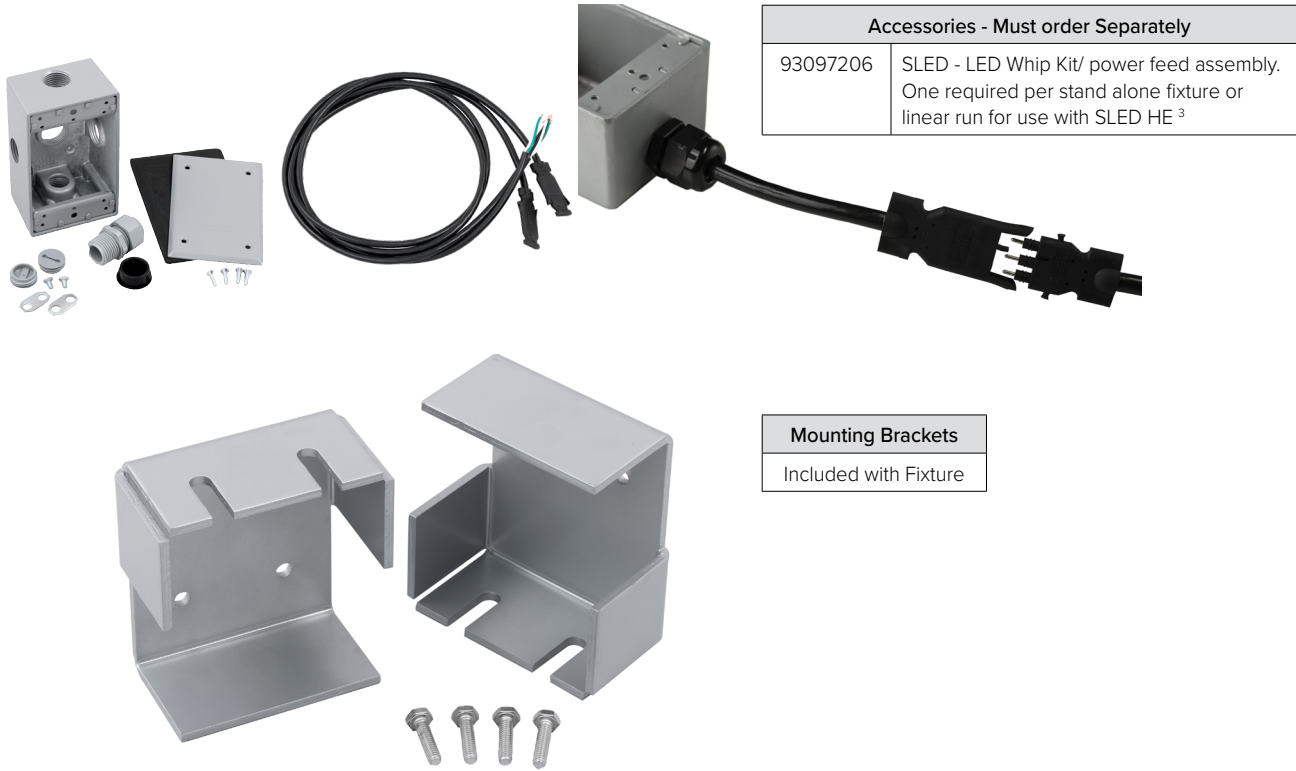
- Must Provide RAL color number and powder coat manufacture name at time of quote request
- Color paint chip would need to be provided at time of quote request
- Must only use factory supplied whip kit to maintain water tight integrity and product warranty
- Made to order, 4 to 8 week lead time
- 5000K color temperature standard
Optional 3000K and 4000K color temp, built to order

Accessories (Order Separately)

- 93073538 Hiras - LED Whip Kit/ power feed assembly.
One required per stand alone fixture or linear run for use with SLED HE³

KEY DATA	
Lumens	834 / 1211
Wattage	30
Efficacy (LPW)	83.6 / 82.9
Reported Life (Hours)	L70 >120,000
Input Current Range (Amps)	.036 - 0.12

ADDITIONAL PRODUCT INFORMATION



Accessories - Must order Separately	
93097206	SLED - LED Whip Kit/ power feed assembly. One required per stand alone fixture or linear run for use with SLED HE 3

Mounting Brackets
Included with Fixture

ELECTRICAL DATA

# of LEDs	# of Drivers	Drive Current (mA)	Input Voltage (V)	System Power (W)	Input Current (Amps)
24	1	350	120	9.98	0.083
			277	9.98	0.036
36	1	350	120	14.6	0.12
48	1	350	120	17	0.14
			277	17	0.061

PROJECTED LUMEN MAINTENANCE

Ambient Temp.	0	25,000	50,000	1 TM -21-11 60,000	100,000	Calculated L70 (Hours)
40°C / 104°F	100	94.21	88.72	86.61	78.66	>120,000

PERFORMANCE DATA

# of LEDs	Drive Current (Milliamps)	System Watts	Distribution Type	5K (5000K nominal, 80 CRI)				
				Lumens	LPW ¹	B	U	G
24	350	30	down	834	83.6	0	0	0
36	350	30	down	1211	82.9	0	0	0
48	350	30	down	1694	88.7	0	0	0