



RWSC

LED RADIUS WALL SCONCE

The RWSC LED radius wall sconce series offers a combination of light distributions that wash the building facade while the radial soft form housing accentuates building architectural design elements in all commercial and residential applications.

The RWSC LED provides excellent illumination with a high efficiency LED light source of 72 or 36 mid power LEDs that deliver up to 2,400 lumens and up to 109 lumens per watt.

The RWSC LED fixture has become a building standard and is stocked as a quick ship item in many colors and distributions.

Features

- Durable cast aluminum housing
- Integrated design eliminates high angle brightness
- Completely sealed, flat tempered glass lenses, UL listed for use in wet locations
- DLC, Downlight only, full cut-off

Operating Temperature

- -30°C to 40°C

Electrical:

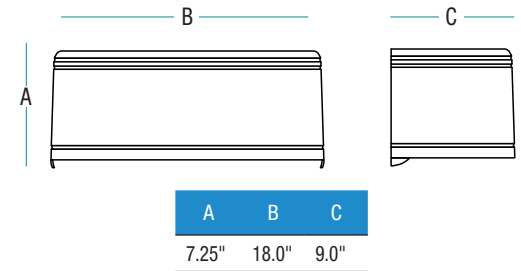
- Dimming is an option (consult factory)

Mounting

RWSC features Intelligent Mounting Bracket which helps save time and money by allowing only one person to easily install. The small mounting bracket is very user friendly and features an integrated level bubble on the bracket ensuring fixture installation will always be perfect.



Dimensions



Certifications/Listings



Ordering Information

Ordering Example: RWSC - XXL - XK - XX - U - XX - XX

RWSC

Series		# of LED's		CCT		Distribution		Voltage		Finish		Options	
RWSC	Radius Wall Sconce	36L ¹	36 Mid-Power LED's	3K	3000K	DO	Down only	U	Universal 120/277V	DB	Dark Bronze	PC	Photocontrol ^{6,7}
		72L ²	72 Mid-Power LED's	5K	5000K	UD	Up/Down			WH	White		
										BK	Black		
										PS	Platinum Silver		
										RA	RAL Color ⁴		
										CC	Custom Color ⁵		

Quick Ship:

- RWSC36LU5KD0BK
- RWSC36LU5KD0WH
- RWSC36LU5KD0DB
- RWSC36LU5KD0PS
- RWSC72L5KUDUWH
- RWSC72LU5KUDBK
- RWSC72LU5KUDDB
- RWSC72LU5KUDPS

Accessories

- LG125T** Remote Emergency Inverter (grid mount only)³
- LG125S** Remote Emergency Inverter (surface mount only)³

¹ 36L Only available in DO distribution
² 72L Only available in UD distribution
³ One remote inverter required to operate every 8 down only or 5 up/down fixtures requiring EM operation
⁴ Must provide RAL color at time of ordering
⁵ Must provide color sample at time of ordering
⁶ PC must be factory installed
⁷ PC available on down only



Performance Data

# of LEDs	Drive Current (Milliamps)	System Watts	Distribution Type	5K (5000K nominal, 80 CRI)					3K (3000K nominal, 80 CRI)				
				Lumens	LPW ¹	B	U	G	Lumens	LPW ¹	B	U	G
36	350	14.4	down	1565	108.7	0	0	0	1561	109.1	0	0	0
72	350	25	up/down	2400	96	n/a	n/a	n/a	2391	97.6	n/a	n/a	n/a

¹Lumen values are from photometric tests performed in accordance with IESNA LM-79-08. Data is considered to be representative of the configurations shown. Actual performance may differ as a result of end-user environment and application.

Photometric Data

LUMINAIRE DATA

RWSC-36L-5K-DO-U-PS

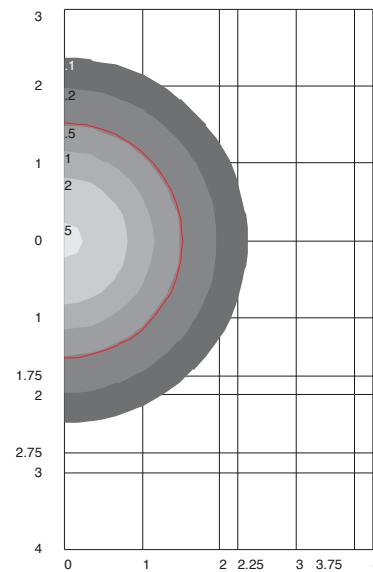
Wall Mounting Outdoor Fixture

DRIVER LED30W-085-C0350

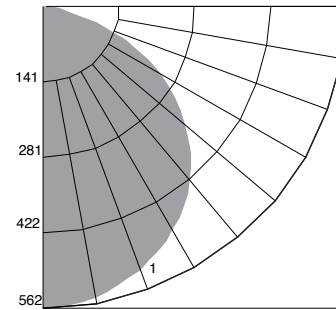
Lamp	LED
Lumens	1565
Watts	14.4
Efficacy	109
Mounting	Wall
Spacing Criterion (0-180)	1.20

ZONE	LUMENS	% FIXT.
Front Low (0-30)	218.6	14.0
Front Medium (30-60)	424.2	27.1
Front High (60-80)	135.5	8.7
Front Very High (80-90)	4.2	0.3
Back Low (0-30)	218.6	14.0
Back Medium (30-60)	424.2	27.1
Back High (60-80)	135.5	8.7
Back Very High (80-90)	4.2	0.3
Uplight Low (90-100)	0.0	0.0
Uplight High (100-180)	0.0	0.0

ISOMETRIC FOOT CANDLES



POLAR GRAPH



LUMINAIRE DATA

RWSC-72L-5K-UD-U-PS

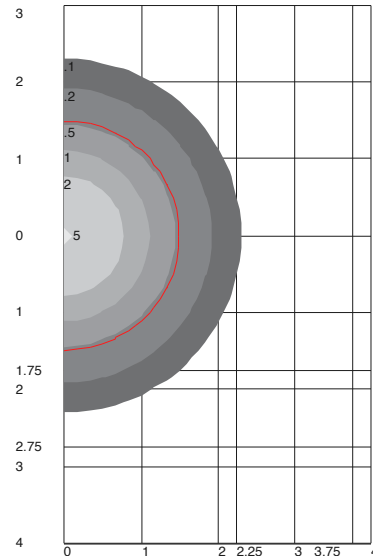
Wall Mounting Outdoor Fixture

DRIVER LED50W-142-C0350

Lamp	LED
Lumens	2400
Watts	25
Efficacy	96
Mounting	Wall
Spacing Criterion (0-180)	1.20

ZONE	LUMENS	% FIXT.
Front Low (0-30)	201.4	8.4
Front Medium (30-60)	387.5	16.1
Front High (60-80)	119.6	5.0
Front Very High (80-90)	3.5	0.1
Back Low (0-30)	201.4	8.4
Back Medium (30-60)	387.5	16.1
Back High (60-80)	119.6	5.0
Back Very High (80-90)	3.5	0.1
Uplight Low (90-100)	5.6	0.2
Uplight High (100-180)	970.7	40.4

ISOMETRIC FOOT CANDLES



POLAR GRAPH

