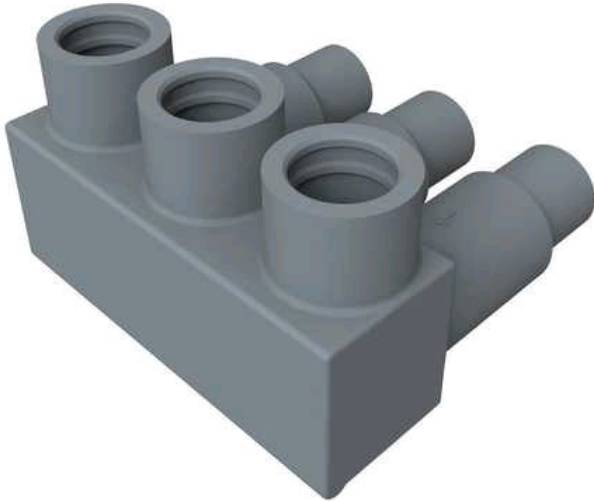


SSBC350-3LI

by CMC

Catalog ID: SSBC350-3LI



Rubber Insulated Secondary Connectors, Wide-port spacing, Dual rated connectors for Aluminum or Copper conductors

- User friendly wide-port spacing (50% more room for cable training).
- Multiple seals incorporated into caps and rockets.
- High quality EPDM rubber.
- Clear plated for low-contact resistance.
- Meets the performance requirements of ANSI C119.1, ANSI C119.4 and Western
- Underground Committee Guide 2.5.
- Supplied with aluminum set-screws.
- Includes silicone grease and CO-OX oxide inhibitor.
- Connector fabricated from 6061-T6 aluminum alloy for conductivity and strength.
- Each unit individually wrapped and labeled for ease of identification and cleanliness.
- For installation, CMC® recommends the use of a 9" insulated hex wrench (no tee handles).
- A torque wrnch should be used to ensure the proper torque is achieved.

Product Details

General

Material	Aluminum Alloy, 6061-T6
UPC	192663109661

Dimensions

Height	2.75 in
Length	4.02 in
Width	4.21 in

Electrical Ratings

Voltage Rating	600 V
----------------	-------

Conductor Related

Number Of Conductors	3
----------------------	---

Certifications and Compliance

Certification - CSA Approved	No
Certification - UL Recognized	Yes
RUS Listed Reference	Yes