



STARLINE II

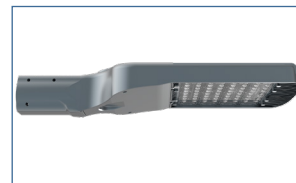
LED Streetlight

The **Starline II** LED perfectly combines innovations in heat management, optical performance and energy saving in a sleek exterior.

The ultimate solution to replace traditional HID sources with versatility and reliability. High power LEDs minimise energy and operating costs, while the low profile appearance and low weight allow the Starline II to be safely installed on new and existing infrastructure.

Mounting Options

Post Top/Slip Fitter. Side Entry Spigot. Wall Mount.



Standard Specification

Starline II LED Streetlight

Enclosure	Die cast aluminum alloy with RAL7030 grey polyester powder coat paint
Entry	Side entry as standard
Termination	Pre-installed flying leads
Installation	Spigot entry (48-60mm OD pole)
Control Gear	Electronic Driver
Colour Temperature (CCT)	5000K (Cool White)
Colour Rendering Index (Ra)	>70
Maintenance	Underside access, secured by socket heads
Ingress Protection	IP65 to EN 60529
Surge Protection	6kV
Electrical Supply	120-240V AC 50/60Hz

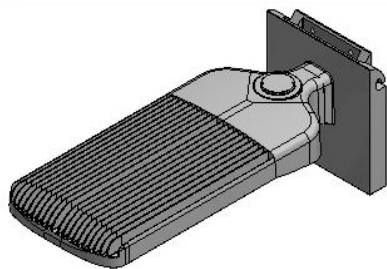
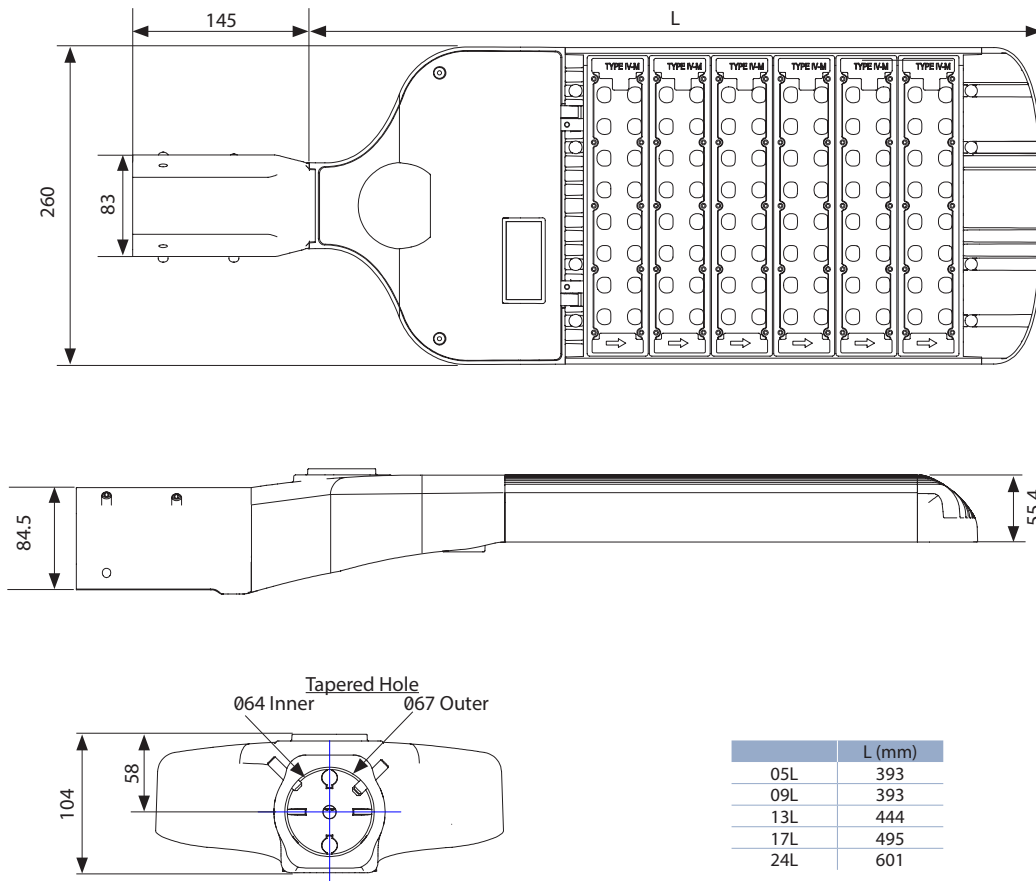
Features

- ◆ Highly **Energy Efficient**
- ◆ **Dark sky friendly**, no upward light
- ◆ **Slim, elegant design**
- ◆ **Lightweight** and low windage
- ◆ **130,000 maintenance free hours** at 25°C (L70)

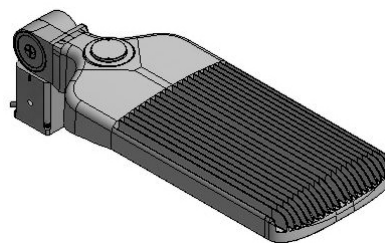
Std. Cat No.	Delivered Output	Power Consumption	Ambient °C	Weight
SL2I/05L/LE	4835 lm	40W	-40 to +55	5.0kg
SL2I/09L/LE	8923 lm	75W	-40 to +55	5.0kg
SL2I/13L/LE	13226 lm	120W	-40 to +55	6.0kg
SL2I/17L/LE	17355 lm	150W	-40 to +55	6.5kg
SL2I/24L/LE	24318 lm	200W	-40 to +55	8.0kg

Options - Suffix to Catalogue No

/SF	Slip Fitter mount (40-55mm OD column)	/WM	Wall mount
/10C	10m (3 core) cable - fitted for ease of installation [spigot entry only]		



Wall Mount



Slip Fitter (Post Top) Mount