

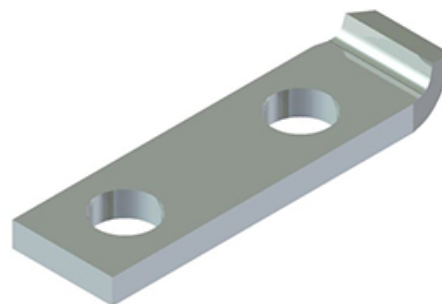
thermOweld

Tin Plated Copper CB-33 Style Lug

By thermOweld

Catalog # [000038357500](#)

Tin Plated Copper CB-33 Style Lug 1/8" X 1", 2 Hole NEMA
Spacing for use with CB-33 type Mold



General

Material Tin Plated Copper
UPC 621945497726

Product Assets