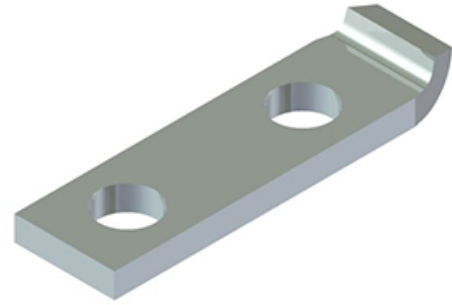


Tin Plated Copper CB-33 Style Lug - J-Bend

By thermOweld
Catalog # 000038429700



Tin Plated Copper CB-33 Style Lug 3/16" X 1", 2 Holes NEMA Spacing, for use with CB-33 type Mold - J-Bend

General

Material	Tin Plated Copper
UPC	781810571576

Logistics

Carton Quantity	10
-----------------	----