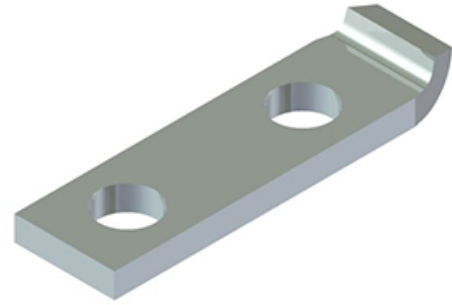


Tin Plated Copper CB-33 Style Lug - J-Bend

By thermOweld
Catalog # 000038429900



Tin Plated Copper CB-33 Style Lug 1/4" X 1 1/2", 2 Hole NEMA Spacing for use with CB-33 type Mold - J-Bend

General

| | |
|----------|-------------------|
| Material | Tin Plated Copper |
| UPC | 781810571590 |

Logistics

| | |
|-----------------|----|
| Carton Quantity | 10 |
|-----------------|----|