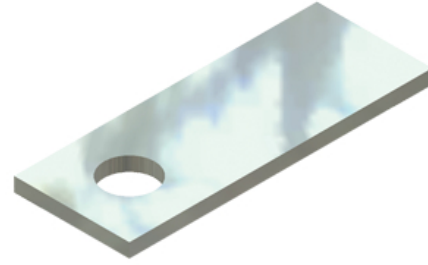


Tin Plated Copper Straight Lug

By thermOweld

Catalog # [000038420300](#)



Tin Plated Copper Straight Lug 3/16" X 1", 1 Hole, for use with CB-1 type mold

Features

- Copper Lugs to be used with CB-1 Type Molds
- Lugs are made from electrolytic grade copper bar stock and tin-plated
- Lugs are available with one, two, or four bolt holes with NEMA spacing
- Offered in a wide variety of styles

General

Catalog Number 000038420300

Material
UPC

Tin Plated Copper
781810572276

Logistics

Carton Quantity	25
Pallet Quantity	22275

Product Assets

[Specifications - 000038420300 Specification Sheet English](#)
[Specifications - 38420300 Specification Sheet French](#)



A Hubbell brand