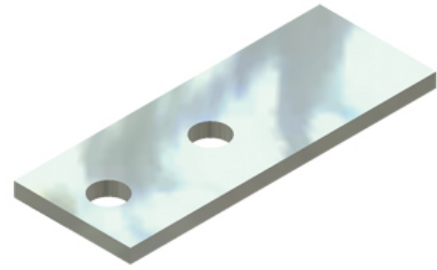


## Tin Plated Copper Straight Lug

By thermOweld

Catalog # [000038420500](#)



Tin Plated Copper Straight Lug 3/16" X 1", 2 Hole, NEMA Spacing,  
for use with CB-1 type mold

### Features

- Copper Lugs to be used with CB-1 Type Molds
- Lugs are made from electrolytic grade copper bar stock and tin-plated
- Lugs are available with one, two, or four bolt holes with NEMA spacing
- Offered in a wide variety of styles

### General

Catalog Number	000038420500
Material	Tin Plated Copper
UPC	781810572283

### Product Assets

[Specifications - 38420500 Specification Sheet French](#)

[Specifications - 000038420500 Specification Sheet English](#)



A Hubbell brand