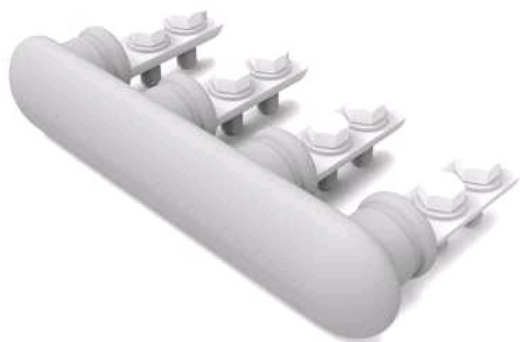


UC55

by CMC
Catalog ID: UC55



Submersible "RESIDENTIAL EEL" Pedestal Connector used with LA and LA2 Compression Lugs for Direct Burial or Below-Grade Boxes, Dual rated connectors for Aluminum or Copper conductors

- Terminal pads are supplied assembled with 3/8" diameter hex head cap screws and captive Belleville washer.
- Pads include interlocking feature with terminal lugs to prevent twisting. Allows field attachments of lugs to be made without removing hardware assemblies.
- Meet the performance requirements of ANSI C119.1, ANSI C119.4 and Western Underground Committee Guide 2.5.

Product Details

General

Material	Aluminum
UPC	192663115754

Dimensions

Height	4.31 in
Width	10.31 in

Electrical Ratings

Voltage Rating	600 V
----------------	-------