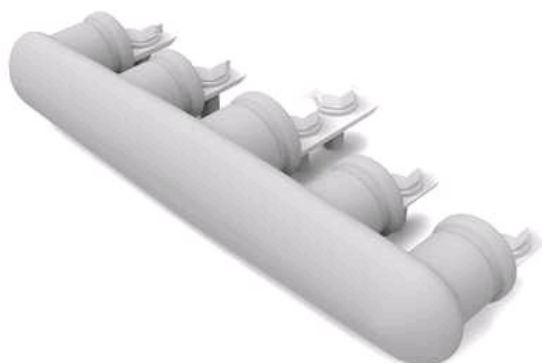


UC61

by CMC
Catalog ID: UC61



Submersible "RESIDENTIAL EEL" Pedestal Connector used with LA and LA2 Compression Lugs for Direct Burial or Below-Grade Boxes, Dual rated connectors for Aluminum or Copper conductors

- Terminal pads are supplied assembled with 3/8" diameter hex head cap screws and captive Belleville washer.
- Pads include interlocking feature with terminal lugs to prevent twisting. Allows field attachments of lugs to be made without removing hardware assemblies.
- Meet the performance requirements of ANSI C119.1, ANSI C119.4 and Western Underground Committee Guide 2.5.

Product Details

General

| | |
|----------|--------------|
| Material | Aluminum |
| UPC | 192663115778 |

Dimensions

| | |
|--------|----------|
| Height | 4.38 in |
| Width | 11.44 in |

Electrical Ratings

| | |
|----------------|-------|
| Voltage Rating | 600 V |
|----------------|-------|