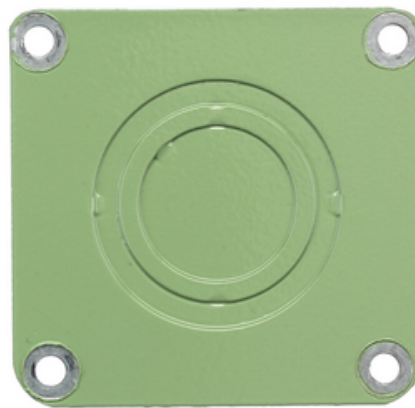




Replacement Knock-out Plate, Corrosion Resistant

By Hubbell Wiring Device-Kellems
Catalog # [CFBKOPATECR](#)

Concrete Floorboxes, Recessed, Galvanized Stamped Steel Box, Replacement Knock-out Plate, Corrosion Resistant



Features

- Replacement Knock-Out Plate
- Epoxy Coated Finish
- Mounting Screws Included

Application

For Use with Concrete Floor Boxes

General

| | |
|------------------------------|-------------------------------|
| Accessory Type | Knock-out Plates |
| Application - For Use On | Concrete |
| Color | Metallic |
| Construction | Steel |
| Construction Material - Main | Steel |
| Cover Shape | Rectangle; Round |
| Cover Type | Rectangle; Round |
| EU RoHS Indicator | Contact Manufacturer |
| Knockouts | 1) 3/4" - 1 1/4" |
| Material | Pre Galvanized Steel |
| Mounting Method | Mounts to Box |
| Mounting Type | (4) Screw Mount |
| Series | Recessed - CFB Series |
| Size | Standard Sized Product |
| Sub Brand | Recessed Concrete Floor Boxes |
| Type | Concrete Floor Box Accessory |
| UPC | 783585447957 |

Dimensions

| | |
|------------|-----------------------------|
| Dimensions | 2.88 in x 2.78 in x 0.12 in |
| Height | 0.12 in |
| Length | 2.88 in |
| Width | 2.78 in |

Conductor Related

Cable Entry Concentric KO's

Certifications and Compliance

Industry Standard(s) cULus

Product Assets

[Catalog Page - Wiring P-11 Catalog page](#)
[Catalog Page - Wiring P-9 Catalog page](#)
[Catalogs - Wiring Full Catalog](#)
[Engineering Drawing - CFBKOPATECR AutoCAD Drawing](#)
[Installation Manuals - WIRING_PD2621_INSTALLINST](#)
[Literature - Hubbell SystemOne Recessed Floor Boxes](#)
[Sales Drawings - WDK_CFBKOPATECR_DRAWING_PDF](#)
[Warranty - Industrial & Commercial Products](#)
[Video - SystemOne Recessed Floor Boxes](#)

Related Products

[CFBS1R4SFBCR - Galvanized Stamped Steel Box, 4" CFBS1R4 Series, 5.00" Minimum Depth of Pour, Corrosion Resistant Paint](#)
[CFB4G30CR - 4-Gang CFB Series Box for Round Covers, 3.75" Minimum Depth of Pour](#)
[CFB6G30RCR - 6-Gang CFB Series Box for Round Covers, 3.75" Minimum Depth of Pour, Corrosion Resistant Paint](#)
[CFB2G30CR - 2-Gang CFB Series Box for Rectangular Covers, 3.00" Minimum Depth of Pour, Corrosion Resistant Paint](#)
[CFB6G30CR - 6-Gang CFB Series Box for Rectangular Covers, 3.00" Minimum Depth of Pour, Corrosion Resistant Paint](#)



A proud member of the Hubbell Family.

©2023 Hubbell Incorporated. All rights reserved.
WDK-CFBKOPATECR-SPEC-EN | REV 5/2023