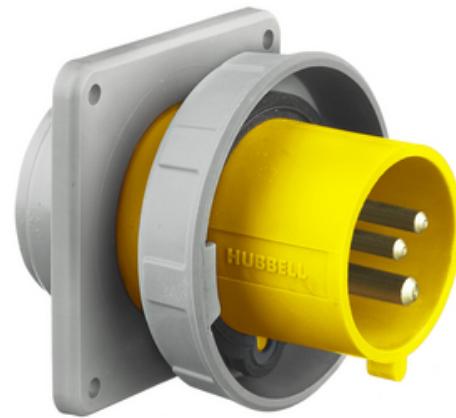




## Heavy Duty Products, IEC Pin and Sleeve, Inlet, Switched, 60A 125V, 2-Pole 3-Wire Grounding, NEMA 4X/IP69K

By Hubbell Wiring Device-Kellems  
Catalog # [HBL360B4W](#)



Heavy Duty Products, IEC Pin and Sleeve, Inlet, Switched, 60A 125V, 2-Pole 3-Wire Grounding, NEMA 4X/IP69K

### Features

- Mates with existing installed base of IEC 60309-2 pin and sleeve devices
- Approved as a disconnecting means for motor circuits and branch circuits
- UL Type 4X, 12 and IP69k environmental ratings
- Impact and corrosion-resistant PBT that is color coded by voltage
- Unswitched ground and power indicating LED lights

### General

Color	Yellow
Number Of Poles	2-Pole
Series	Advantage Switch-Rated
Style	IP69k NEMA 4X
Type	Inlet
UPC	783585479224

### Electrical Ratings

Amperage Rating	60 A
Current / Amperage Rating	60 A
Voltage Rating	125 VAC
Voltage Rating Description	125 VAC

### Conductor Related

Number Of Wires	3-Wire
-----------------	--------

### Product Assets

[Catalog Page - Wiring G-6 Catalog page](#)  
[Catalogs - Wiring Full Catalog](#)  
[Engineering Drawing - HBL360B4W AutoCAD Drawing](#)  
[Installation Manuals - WIRING\\_PD1304\\_INSTALLINST](#)  
[Literature - WIRING\\_WLFVM034](#)  
[Literature - Pulp & Paper Solutions](#)  
[Sales Drawings - WDK\\_HBL360B4W\\_DRAWINGS\\_PDF](#)  
[Warranty - Industrial & Commercial Products](#)  
[Video - Advantage Series Switch-Rated Pin & Sleeve](#)

### Related Products

[HBL360C4W - Heavy Duty Products, IEC Pin and Sleeve, Connector, Switched, 60A 125V, 2-Pole 3-Wire Grounding, NEMA 4X/IP69K](#)  
[HBL360B4W - Heavy Duty Products, IEC Pin and Sleeve Devices, Industrial Grade, Male, Flanged Inlet, 60A 125V AC, 2-Pole 3-Wire Grounding, Watertight](#)  
[BB60N - Heavy Duty Products, IEC Pin and Sleeve Devices, Industrial Grade, Back Box, For 60A 1 1/4" NPT Hub, Angled, Mounting Screws Included Non-Metallic](#)  
[HBL360R4W - Heavy Duty Products, IEC Pin and Sleeve, Receptacle, Switched, 60A 125V, 2-Pole 3-Wire Grounding, NEMA 4X/IP69K](#)  
[BB601W - Heavy Duty Products, IEC Pin and Sleeve Devices, Industrial Grade, Back Box, For 60A 1 1/4" NPT Hub, Angled, Mounting Screws Included Cast Aluminum](#)



A proud member of the Hubbell Family.

©2023 Hubbell Incorporated. All rights reserved.  
WDK-HBL360B4W-SPEC-EN | REV 5/2023