

**Heavy Duty Products, IEC Pin and Sleeve,
Inlet, Switched, 60A 250V/63A 220-240V,
2-Pole 3-Wire Grounding, NEMA4X/IP69K**

By Hubbell Wiring Device-Kellems
Catalog # [HBL360B6W](#)

IEC Pin and Sleeve Switched Inlet, 60/63A

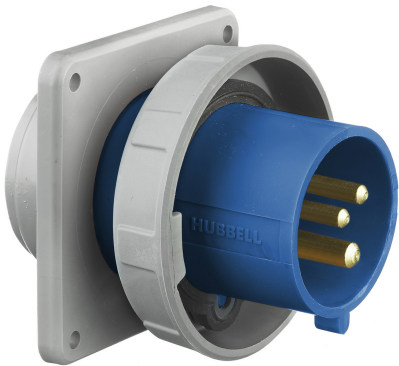
Features

- Mates with existing installed base of IEC 60309-2 pin and sleeve devices
- Approved as a disconnecting means for motor circuits and branch circuits
- UL Type 4X, 12 and IP69k environmental ratings
- Impact and corrosion-resistant PBT that is color coded by voltage
- Unswitched ground and power indicating LED lights

Conductor

Number Of Wires	3-Wire
Number Of Poles	2-Pole

Current



Current / Amperage Rating	60/63 A
Amperage Rating	60/63 A
Voltage Rating Description	250 VAC/220-250 VAC
Voltage Rating	250 VAC/220-250 VAC

General

Type	Watertight Inlet
Series	Advantage® Series
UPC	783585479231
Style	IP69k NEMA 4X
Color	Blue

Product Assets

[Catalog \[English\]](#)
[Installation Manual \[French, English\]](#)