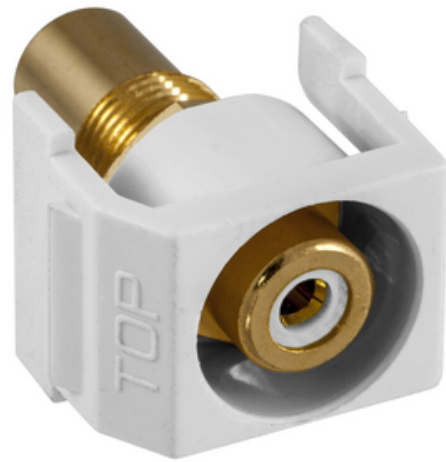




Recessed RCA Connector, White Insulator, White Housing

By Hubbell Wiring Device-Kellems
Catalog # [SFRCWRW](#)

Recessed RCA Connector, White Insulator, White Housing



Features

- Flush mount design
- High quality Gold plating
- Seamless Hubbell system integration

Application

Snap-Fit RCA Jack, Recessed

General

Contact	Beryllium Copper
EU RoHS Indicator	Yes
Environmental Conditions	Indoor Dry Unless Protected By Additional Means
Item Type	iSTATION RCA and Data Keystone Connectors
Material - Mounting Hardware Style	Snap-On- Snap-Fit White Insulator
Temperature Rating	Per TIA
Type	RCA, Pass-Thru, Recessed
UPC	662620283463

Dimensions

Display Size	Standard Sized Product
--------------	------------------------

Electrical Ratings

Connectivity	Plug-N-Play
Contact Resistance	100 Ohm
Withstand Voltage	1000V RMS, 1414V DC

Logistics

Carton Quantity	25
-----------------	----

Product Assets

[Catalog Page - Wiring AA-10 Catalog Page](#)
[Catalog Page - Wiring Z-7 Catalog page](#)
[Catalogs - Wiring Full Catalog](#)
[Warranty - Industrial & Commercial Products](#)

Related Products

[SFRCWRBK - Recessed RCA Connector, White Insulator, Black Housing](#)
[SFRCWROW - Recessed RCA Connector, White Insulator, Office White Housing](#)
[SFRCGNRW - Recessed RCA Connector, Green Insulator, White Housing](#)
[SFRCWRGY - Recessed RCA Connector, White Insulator, Gray Housing](#)
[SFRCBKRW - Recessed RCA Connector, Black Insulator, White Housing](#)



A proud member of the Hubbell Family.

©2023 Hubbell Incorporated. All rights reserved.
WDK-SFRCWRW-SPEC-EN | REV 5/2023