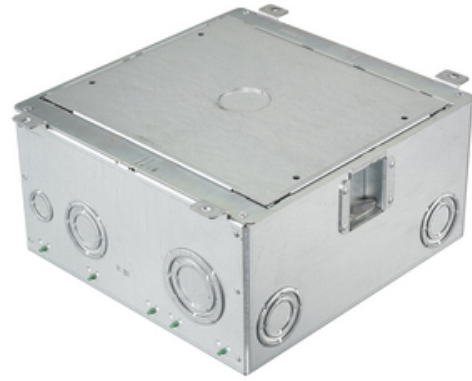




# 8/10-Gang AFB Series, 5.50" Deep Rectangular Box with Installation Cover

By Hubbell Wiring Device-Kellems  
 Catalog # [AFB10G55](#)



Raised Access or Wood Floorboxes, Galvanized Stamped Steel Box, Recessed, 8/10-Gang AFB Series, 5.50" Deep Rectangular Box with Installation Cover.

## Features

- Recessed 8/10-Gang Rectangular Floorbox
- For Use In Raised Access or Wood Floors
- Mounts in Floors 3/4" to 2" thick
- Box Includes Installation Cover
- Each Gang Includes (1) 6" Solid Conductor Grounding Pigtail
- (2) 2-Gang Dual Service & 4-Gang Single Service NEMA Spaced Plates Available

## Application

For Use in Raised Access or Wooden Floors

## General

Application - For Use On	Raised Access; Wood
Color	<ul style="list-style-type: none"> <li>• Steel</li> <li>• Acier</li> </ul>
Construction	Fabricated
Cover Shape	Rectangle
EU RoHS Indicator	Contact Manufacturer
Knockouts	6) 3/4"-1 1/2", 2) 1/2"-3/4", 2) 1"- 2", 2) 1"-2", "4) 1/2"-1-1/4
Material	Pre Galvanized Steel
Mounting Method	Drop-Into Floor
Mounting Type	Mechanical Mount
Number of Gang(s)	10-Gang
Series	Recessed Rectangular - AFB Series
Size	10-Gang
Type	<ul style="list-style-type: none"> <li>• Recessed Access Floor Box</li> <li>• Recessed Access Floor Box</li> </ul>
UPC	783585447445

## Dimensions

Dimensions	10.96 in x 10.96 in x 5.74 in
Height	5.74 in
Length	10.96 in
Width	10.96 in

## Conductor Related

Cable Entry	Through Cover
-------------	---------------

## Certifications and Compliance

Industry Standard(s)	<ul style="list-style-type: none"> <li>• cULus</li> <li>• UL514</li> </ul>
----------------------	--

## Product Assets

[BIM - Electrical\\_Equipment-Floor\\_Box-Hubbell\\_Wiring-10\\_Gang\\_AFB\\_Deep-AFB10G55](#)  
[Catalog Page - WDK O-51 Catalog Page](#)  
[Catalog Page - WDK O-46 Catalog Page](#)  
[Catalogs - WDK Catalog Full 2023](#)  
[Engineering Drawing - AFB10G55 AutoCAD Drawing](#)  
[Installation Manuals - WIRING\\_PD2614\\_INSTALLINST](#)  
[Literature - Connexion 2.0 Zone Distribution System](#)  
[Literature - Delivery Systems Product Guide](#)  
[Literature - Hubbell SystemOne Recessed Floor Boxes](#)  
[Literature - SystemOne Eternal™ Series 10-Gang Rectangular Floor Boxes \(EP-WDK-SF-EN-01479\)](#)  
[Literature - 8/10-Gang Floor Boxes](#)  
[Sales Drawings - WDK\\_AFB10G55\\_DRAWING\\_PDF](#)  
[Warranty - Industrial & Commercial Products](#)

## Related Products

[FB10TLX - 8/10-Gang Series, Mounting Plate, 2-Gang, \(1\) Simplex 1.40" Diameter Opening](#)  
[10GAFBCVRALUC - 8/10-Gang AFB Series, Cover Assembly, Aluminum Powder Paint Finish with Floor Insert](#)  
[FB10MP2B - 8/10-Gang Series, Mounting Plate, 2-Gang, Opening Accommodates \(6\) 1-Unit Hubbell iStation Modules](#)  
[FB10TLC - 8/10-Gang Series, Mounting Plate, 5-Gang, \(3\) Twist-Lock® 1.60" Diameter Openings](#)  
[FB10MP3GAPP - 8/10-Gang Series, Mounting Plate, 3-Gang, \(1\) Opening for Appliance Receptacle](#)



**A proud member of the Hubbell Family.**

©2024 Hubbell Incorporated. All rights reserved.  
WDK\_CA-AFB10G55-SPEC-EN | REV 1/2024