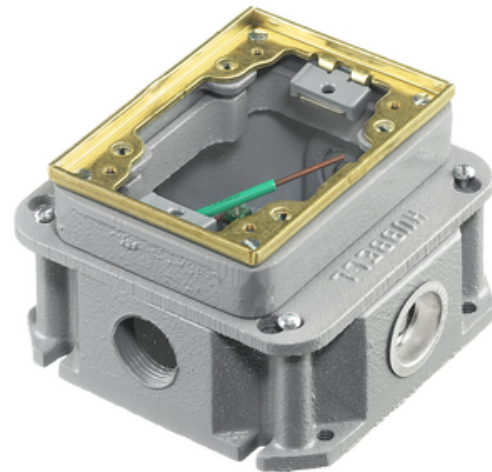




1-Gang, Rectangular Cast Iron Box, Deep, Fully Adjustable, Single Service, Brass Top

By Hubbell Wiring Device-Kellems
Catalog # [B243641](#)



1-Gang Deep Rectangular Single Flush Concrete Floor Box, Cast Iron, Fully Adjustable, Single Service, Brass Top.

Features

- Flush Concrete Rectangular Floorbox
- Single Gang Cast Iron
- 3.25" Minumim Depth of Pour
- Fully-Adjustable

Application

Single Service In-Floor Delivery Systems

General

Application - For Use On	Concrete
Color	<ul style="list-style-type: none"> • Brass Flange • Laiton
Construction	Case Iron
EU RoHS Indicator	No
Finish Type	Brass
Knockouts	4) 1"
Material	Cast Iron
Mounting Method	Cast Into Concrete
Number of Gang(s)	1-Gang
Series	Flush Rectangular - B24 Series
Size	2-Gang
Type	<ul style="list-style-type: none"> • 1-Gang Deep Rectangular Cast Iron Box • 1-Gang Deep Rectangular Cast Iron Box
UPC	783585100500

Dimensions

Dimensions	4.69 in x 4.69 in x 3.15 in
Height	3.15 in
Length	4.69 in
Width	4.69 in

Conductor Related

Cable Entry From Top

Certifications and Compliance

Industry Standard(s)

- UL/CSA
- UL514

Logistics

Carton Quantity 4

Product Assets

[BIM - Electrical_Equipment-Floor_Box-Hubbell_Wiring-1-Gang-Rectangular_Cast_Iron-B2436](#)
[Catalogs - WDK Catalog Full 2023](#)
[Customer Notices - Prop 65 Notice](#)
[Engineering Drawing - B243641 AutoCAD Drawing](#)
[Installation Manuals - WIRING_PD1437_INSTALLINST](#)
[Sales Drawings - WDK_B243641_DRAWING_PDF](#)
[Warranty - Industrial & Commercial Products](#)

Related Products

[S3083 - 1-Gang Carpet Flange, Rectangular, 6.00" X 4.85", Clear Polycarbonate](#)
[S3825 - 1-Gang Cover, Rectangular, Duplex Flaps, Brass](#)
[SB3083W - 1-Gang Flat Flange with Grounding Wire, Rectangular, 6.00" X 4.85", Brushed Brass](#)
[S3625 - 1-Gang Cover, Rectangular, Duplex Threaded Screws, Brass](#)
[S3813 - 1-Gang Cover, Rectangular, Blank, Brass](#)



A proud member of the Hubbell Family.

©2024 Hubbell Incorporated. All rights reserved.
WDK_CA-B243641-SPEC-EN | REV 1/2024