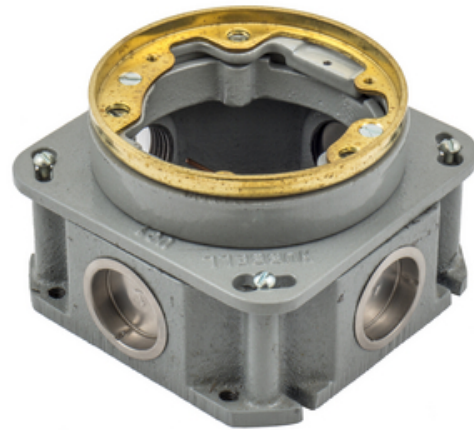




1-Gang, Round, Cast Iron Box, Shallow, Fully Adjustable, Single Service, Brass Top

By Hubbell Wiring Device-Kellems
Catalog # [B2537](#)



Flush Concrete Floor Box, 1-Gang, Round, Cast Iron Box,
Shallow, Fully Adjustable, Single Service, Brass Top.

Features

- Corrosion resistant for on-grade applications
- 1" NPT threaded conduit access holes for power
- Oversized threaded conduit access holes for low voltage

Application

Single Service In-Floor Delivery Systems

General

Application - For Use On	Concrete
Color	<ul style="list-style-type: none">• Brass Flange• Laiton
Construction	Case Iron
EU RoHS Indicator	No
Knockouts	4) 3/4"
Material	Cast Iron
Mounting Method	Cast Into Concrete
Series	Flush Round - B25 Series
Type	<ul style="list-style-type: none">• Round Cast Iron Box• Round Cast Iron Box
UPC	783585102207

Dimensions

Dimensions	4.84 in x 4.84 in x 2.87 in
Height	2.87 in
Length	4.84 in
Width	4.84 in

Conductor Related

Cable Entry From Top

Certifications and Compliance

Industry Standard(s)

- UL/CSA
- UL514

Logistics

Carton Quantity 4

Product Assets

[BIM - Electrical_Equipment-Floor_Box-Hubbell_Wiring-Single_Service_Metal_Concrete-B2537](#)
[Catalogs - WDK Catalog Full 2023](#)
[Customer Notices - Prop 65 Notice](#)
[Engineering Drawing - B2537 AutoCAD Drawing](#)
[Installation Manuals - WIRING_PD1437_INSTALLINST](#)
[Literature - Delivery Systems Product Guide](#)
[Sales Drawings - WDK_B2537_DRAWING_PDF](#)
[Warranty - Industrial & Commercial Products](#)

Related Products

[S2725 - 1-Gang Cover, Round, Combination 2-1/8"X 1" Threaded Opening, Brass](#)
[S3925 - 1-Gang Cover, Round, Duplex Flaps, Brass](#)
[S3525 - 1-Gang Cover, Round, 2-3/8" Threaded Opening, Brass](#)
[S3079 - 1-Gang Carpet Flange, Round, 5.25" Diameter, Clear Polycarbonate](#)
[S2925 - 1-Gang Cover, Round, 2-1/8" Threaded Opening, Brass](#)



A proud member of the Hubbell Family.

©2024 Hubbell Incorporated. All rights reserved.
WDK_CA-B2537-SPEC-EN | REV 1/2024