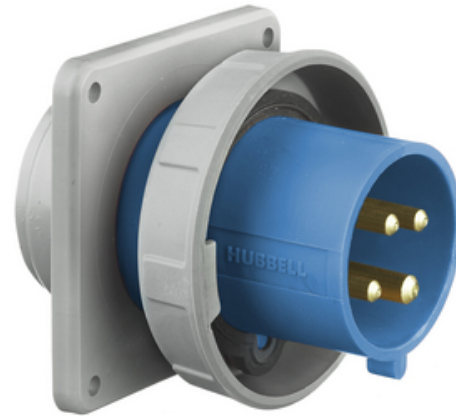




# Heavy Duty Products, IEC Pin and Sleeve Devices, Industrial Grade, Male, Flanged Inlet, 20A 3-Phase Delta 250V AC, 3-Pole 4-Wire Grounding, Watertight

By Hubbell Wiring Device-Kellems  
Catalog # [HBL420B9W](#)



Heavy Duty IEC Pin and Sleeve Industrial Grade Male Flanged Inlet, 20A 3-Phase Delta 250V AC, 3-Pole 4-Wire Grounding, Terminal Screws, Watertight.

## Features

- Rugged one-piece housing
- Thermoset polyester contact carrier
- Solid one-piece pins for reliable electrical contact

## Application

High Ampacity Watertight Connections

## General

Color	<ul style="list-style-type: none"> <li>• Blue</li> <li>• Bleu</li> </ul>
Environmental Conditions	Watertight
Insulation	Insulated Body
Item Type	Single Flanged
Material	Thermoplastic
Material - Mounting Hardware	Screw Mounting
Number Of Poles	3-Pole
Performance	<ul style="list-style-type: none"> <li>• Electrical - Current Interrupting - Certified for current interrupting at full rated current</li> <li>• Electrical - Dielectric Voltage - 3000V AC</li> <li>• Electrical - Max. Working Voltage - 600V RMS</li> <li>• Environmental - Flammability - HB or better per UL 94 or CSA C22.2 No. 0.17</li> <li>• Environmental - Ingress Protection - IP67 Suitability</li> <li>• Environmental - Moisture Resistance - Watertight per IEC 60309-1.</li> <li>• Environmental - Operating Temperatures - Maximum Continuous 75°C</li> <li>• Minimum - 40°C w/o impact</li> <li>• Mechanical - Cord Grip</li> </ul>

## Dimensions

Display Size Standard Sized Product

## Electrical Ratings

Amperage Rating	20 A
Connectivity	Pressure Terminal Screws
Current / Amperage Rating	20 A
Current Rating	20 A
Dielectric Strength	Withstands 3000V Minimum in
Phase	Three Phase
Voltage Rating	3 Phase 250 VAC
Voltage Rating Description	3 Phase 250 VAC
Wattage	5000

## Conductor Related

Number Of Wires	4-Wire
Wire Size	#14 AWG to #10 AWG

## Certifications and Compliance

Industry Standard(s)	<ul style="list-style-type: none"> <li>• CSA Certified File LR280C</li> <li>• UL Classified to IEC 60309-1 IEC 60309-2</li> <li>• UL Listed, File E146032</li> </ul>
----------------------	--

Nema Rating Non-NEMA

## Logistics

Carton Quantity 10

## Product Assets

- [Catalog Page - WDK G-10 Catalog Page](#)
- [Catalogs - WDK Catalog Full 2023](#)
- [Engineering Drawing - HBL420B9W AutoCAD Drawing](#)
- [Installation Manuals - WIRING\\_PD1304\\_INSTALLINST](#)
- [Literature - IEC Pin & Sleeve Devices](#)
- [Literature - IEC Pin & Sleeve Devices](#)
- [Literature - Dual-Certified IEC Pin & Sleeve Devices](#)
- [Sales Drawings - WDK\\_HBL420B\\_DRAWING\\_PDF](#)
- [Warranty - Industrial & Commercial Products](#)

Retention - Per CSA C22.2  
No.182.1 /UL1682

- Mechanical - Product Identification - Identification and ratings are a permanent part of the device housing
- Mechanical - Terminal Identification - Terminals identified in accordance with North American and IEC conventions

Series	HBL Heavy Duty
Style	Standard Service
Temperature Rating	Maximum continu : 75° C ; Minimum continu : -40° C sans impact
Type	<ul style="list-style-type: none"><li>• Watertight Inlet</li><li>• Watertight Inlet</li></ul>
UPC	783585404271



**A proud member of the Hubbell Family.**

©2024 Hubbell Incorporated. All rights reserved.  
WDK\_CA-HBL420B9W-SPEC-EN | REV 1/2024