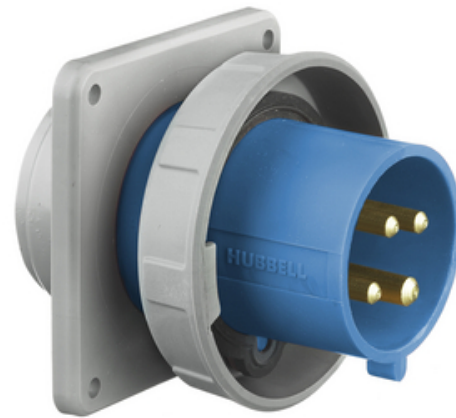




Heavy Duty Products, IEC Pin and Sleeve Devices, Industrial Grade, Male, Flanged Inlet, 30A 3-Phase Delta 250V AC, 3-Pole 4-Wire Grounding, Watertight

By Hubbell Wiring Device-Kellems
 Catalog # [HBL430B9W](#)



Heavy Duty IEC Pin and Sleeve Industrial Grade Male Flanged Inlet, 30A 3-Phase Delta 250V AC, 3-Pole 4-Wire Grounding, Terminal Screws, Watertight.

Features

- Rugged one-piece housing
- Thermoset polyester contact carrier
- Solid one-piece pins for reliable electrical contact

Application

High Ampacity Watertight Connections

General

Color	<ul style="list-style-type: none"> • Blue • Bleu
Environmental Conditions	Watertight
Insulation	Insulated Body
Item Type	Single Flanged
Material	Thermoplastic
Material - Mounting Hardware	Screw Mounting
Number Of Poles	3-Pole
Performance	<ul style="list-style-type: none"> • Electrical - Current Interrupting - Certified for current interrupting at full rated current • Electrical - Dielectric Voltage - 3000V AC • Electrical - Max. Working Voltage - 600V RMS • Environmental - Flammability - HB or better per UL 94 or CSA C22.2 No. 0.17 • Environmental - Ingress Protection - IP67 Suitability • Environmental - Moisture Resistance - Watertight per IEC 60309-1. • Environmental - Operating Temperatures - Maximum Continuous 75°C • Minimum - 40°C w/o impact • Mechanical - Cord Grip

Dimensions

Display Size Standard Sized Product

Electrical Ratings

Amperage Rating	30 A
Connectivity	Pressure Terminal Screws
Current / Amperage Rating	30 A
Current Rating	30 A
Dielectric Strength	Withstands 3000V Minimum in
Phase	Three Phase
Voltage Rating	3 Phase 250 VAC
Voltage Rating Description	3 Phase 250 VAC
Wattage	7500

Conductor Related

Number Of Wires	4-Wire
Wire Size	#12 AWG to #8 AWG

Certifications and Compliance

Industry Standard(s)	<ul style="list-style-type: none"> • CSA Certified File LR280C • UL Classified to IEC 60309-1 IEC 60309-2 • UL Listed, File E146032
Nema Rating	Non-NEMA

Logistics

Carton Quantity	10
-----------------	----

Product Assets

- [Catalog Page - WDK G-6 Catalog Page](#)
- [Catalog Page - WDK G-10 Catalog Page](#)
- [Catalogs - WDK Catalog Full 2023](#)
- [Engineering Drawing - HBL430B9W AutoCAD Drawing](#)
- [Installation Manuals - WIRING_PD1304_INSTALLINST](#)
- [Literature - IEC Pin & Sleeve Devices](#)
- [Literature - Dual-Certified IEC Pin & Sleeve Devices](#)
- [Literature - IEC Pin & Sleeve Devices](#)
- [Literature - Advantage™ Series Switch-Rated IEC Pin & Sleeve Devices](#)
- [Sales Drawings - WDK_HBL430B_DRAWING_PDF](#)
- [Warranty - Industrial & Commercial Products](#)

- Mechanical - Product Identification - Identification and ratings are a permanent part of the device housing
- Mechanical - Terminal Identification - Terminals identified in accordance with North American and IEC conventions

Series	HBL Heavy Duty
Style	Standard Service
Temperature Rating	Maximum continu : 75° C ; Minimum continu : -40° C sans impact
Type	<ul style="list-style-type: none">• Watertight Inlet• Watertight Inlet
UPC	783585404486



A proud member of the Hubbell Family.