

Industrial Grade, Disconnect Switches, Unfused Switch, Break after Main Break Auxiliary Contact, For 30A and 60A and 100A Pilot Duty.

By Hubbell Wiring Device-Kellems
Catalog # [HBLAC1](#)

Switches and Lighting Controls, Industrial Grade, Disconnect
Switches, Unfused Switch, Break after Main Break Auxiliary
Contact, For 30A and 60A and 100A Pilot Duty.

Features

- Industrial Grade Unfused Switch
- Break after Main Break Auxiliary Contact
- For 30A and 60A and 100A Pilot Duty.

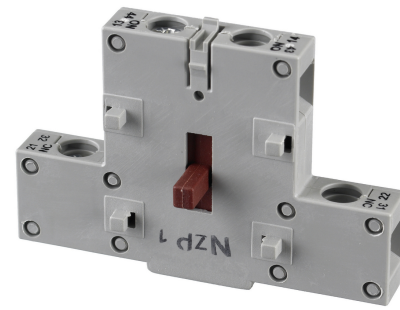
Performance

Electrical - Current Interrupting - Certified for current interrupting at full rated current voltage, Electrical - Dielectric Voltage - Withstands 3,000V Min, Electrical - Max. Working Voltage - 600V RMS, Electrical - Operations - Mechanical 10,000 cycles, Electrical 6,000 cycles, Environmental - Flammability - Meets UL 94V0 material classification, Environmental - Moisture Resistance - IP66 suitability, Environmental - Operating Temperature - Maximum continuous +75°C Minimum continuous -40°C, Environmental - UV Resistance - All exposed materials are UV stabilized, Mechanical - Impact Resistance - In accordance with UL 746C, Mechanical - Mounting - External full adjustable feet, Mechanical - Product Identification - Identification and ratings are part of the external label and receptacle face, Mechanical - Terminal Identification - In accordance with UL, CSA

Specifications

Standards - RoHS Compliance Status	CM
EU RoHS Indicator	No
Industry Standard(s)	<ul style="list-style-type: none">• Certified to CSA Standard• Listed to UL Standard• Type 3R and 12K Enclosure Rating

Current



Dielectric Strength Withstands 3,000V minimum

Dimensions

Weight 0.1 lb.

General

Style Auxiliary Contacts
Series

- Non-Fused
- Fused

UPC 783585955117
Type Accessories
Item Type Switched Enclosure Auxiliary Contact

Logistics

Pallet Quantity 4750
Carton Quantity 50

Operational

Operating Temperature Maximum continuous 75°C and minimum -40°C without Impact

Product Assets

[Catalog \[English\]](#)
[Catalog Page \[English\]](#)
[Catalog Page \[English\]](#)
[Catalog Page \[English\]](#)
[Catalog Page \[English\]](#)
[Catalog Page \[English\]](#)
[Installation Manual \[Spanish, French, English\]](#)