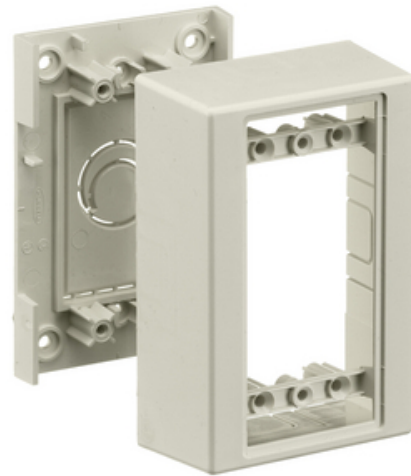




Non-Metallic Raceway, WallTrak1 Series, Box, 1-Gang, Standard, Office White

By Hubbell Wiring Device-Kellems
Catalog # [PW1SBA](#)



Non-Metallic Raceway, WallTrak1 Series, Box, 1-Gang, Standard.

Features

- Reduces inventory requirements
- Eliminates need to order three separate boxes
- Boxes available in low, standard and deep profiles

General

Color	<ul style="list-style-type: none">• Office White• Blanc cassé
EU RoHS Indicator	Contact Manufacturer
Item Type	PW1 WallTrak (Latching) Series
Number of Gang(s)	1-Gang
Performance	<ul style="list-style-type: none">• Environmental - Flame Rating - UL94V-0• Environmental - Temperature Range - -25.6° to 158° F
Series	PW1
Style	Standard
Type	<ul style="list-style-type: none">• Boxes• Boxes
UPC	783585092126

Certifications and Compliance

Industry Standard(s)	<ul style="list-style-type: none">• CSA Standard C22.2 no. 62• E118895 / E119190• UL Standard UL 5A
----------------------	---

Logistics

Carton Quantity	5
-----------------	---

Product Assets

[Catalog Page - WDK S-57 Catalog Page](#)
[Catalogs - WDK Catalog Full 2023](#)
[Engineering Drawing - PW1SBA AutoCAD Drawing](#)
[Installation Manuals - WIRING_PD2213_INSTALLINST](#)
[Sales Drawings - WDK_PW1SBA_DRAWING_PDF](#)
[Warranty - Industrial & Commercial Products](#)



A proud member of the Hubbell Family.

©2024 Hubbell Incorporated. All rights reserved.
WDK_CA-PW1SBA-SPEC-EN | REV 1/2024