

# SystemOne Universal Cover Tile Flange Assembly, Gray Powder Paint Finish

By Hubbell Wiring Device-Kellems  
Catalog # [S1TFCGY](#)

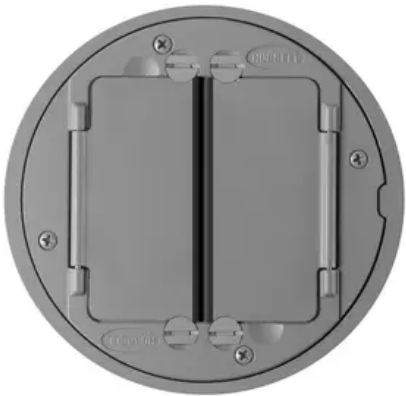
In-Floor Delivery Systems, SystemOne Universal Cover Tile  
Flange Assembly, Gray Powder Paint Finish

## Features

- Durable Powder Coat Finish
- Cast Aluminum Construction
- Dual Hinged Doors Open 180 Degrees
- ADA Compliant
- Scrubwater Compliant

## General

Application - For Use On	Tile
Catalog Number	S1TFCGY
Color	Gray
Construction	Cast Aluminum
Cover Shape	Round
EU RoHS Indicator	No
Finish Type	Gray
Item Type	Flush Cover/Tile Flange
Material	Composite
Material - Mounting Hardware	Mounting Hardware Included
Mounting Method	To Fitting in Floor
Number Of Outlets	No Devices
Specifications	<ul style="list-style-type: none"><li>• Cover Format - Tile</li><li>• Finish - Carton of 1</li><li>• For Use With - SystemOne Components</li><li>• Product Type - SystemOne Universal Covers</li><li>• Unit Package - Single</li></ul>
Style	Cover Flanges
Type of Use	Tile, Flush



Typical Application	Tile, Flush
UPC	783585371122

## Dimensions

Width	5.62 in
-------	---------

## Certifications And Compliance

Industry Standard(s)	cULus
----------------------	-------

## Logistics

Carton Quantity	5
Pallet Quantity	660

## Product Assets

- [Brochures - Floorbox Selection Guide](#)
- [Catalog Page - WDK P-28 Catalog Page](#)
- [Catalog Page - WDK O-21 Catalog Page](#)
- [Catalogs - WDK Catalog Full 2024](#)
- [Engineering Drawing - S1TFCGY AutoCAD Drawing](#)
- [Engineering Drawing - Legacy SystemOne Solution Drawing](#)
- [Installation Manuals - WIRING\\_PD2103\\_INSTALLINST](#)
- [Literature - Delivery Systems Product Guide](#)
- [Sales Drawings - WDK\\_S1\\_DRAWING\\_PDF](#)
- [Sales Drawings - WDK\\_S1TFC\\_DRAWING\\_PDF](#)
- [Specifications - Wiring S1TFCGY Specification Sheet](#)
- [Specifications - S1TFCGY Specification Sheet French](#)
- [Specifications - S1TFCGY Specification Sheet](#)
- [Warranty - Industrial & Commercial Products](#)

