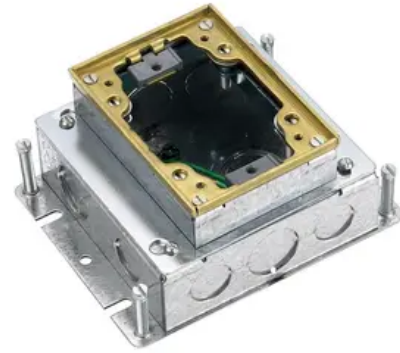


1-Gang, Rectangular, Galvanized Stamped Steel Box, Shallow, Fully Adjustable, Single Service, Brass Top

By Hubbell Wiring Device-Kellems
Catalog # B2421



Flush Concrete Floor Box Series, 1-Gang, Rectangular,
Galvanized Stamped Steel Box, Shallow, Fully Adjustable, Single
Service, Brass Top

Application

Single Service In-Floor Delivery Systems

General

Application - For Use On	Concrete
Catalog Number	B2421
Color	Brass Flange
Construction	Fabricated
EU RoHS Indicator	No
Knockouts	3)1/2", 2) 3/4", 2)3/4"-1 1/4"
Material	Galvanized Stamped Steel
Mounting Method	Cast Into Concrete
Number of Gang(s)	1-Gang
Series	Flush Rectangular - B24 Series
Size	1-Gang
Specifications	<ul style="list-style-type: none">• Collar Material - Brass• Cubic Capacity - 39.5 cu. in. (647.3 cm³)• Min. Depth of Pour - 2.75" (69.9)• Size - 1-Gang
Type	1-Gang Shallow Rectangular Galvanized Stamped Steel Box
UPC	783585100241

Dimensions

Dimensions	4.81 in x 6 in x 2.74 in
Height	2.74 in
Length	4.81 in
Width	6 in

Conductor Related

Cable Entry	From Top
-------------	----------

Certifications And Compliance

Industry Standard(s)	<ul style="list-style-type: none">• UL/CSA• UL514
----------------------	--

Logistics

Carton Quantity	4
-----------------	---

Product Assets

[Catalogs - WDK Catalog Full 2024](#)
[Customer Notices - Prop 65 Notice](#)
[Specifications - B2421](#)
[Warranty - Industrial & Commercial Products](#)