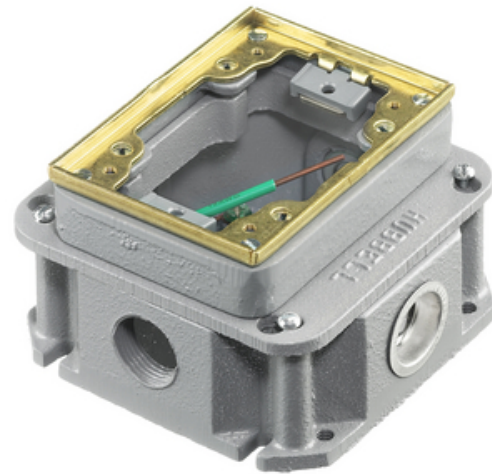




1-Gang, Rectangular Cast Iron Box, Deep, Fully Adjustable, Single Service, Brass Top

By Hubbell Wiring Device-Kellems
 Catalog # [B243641](#)



Flush Concrete Floor Box Series, 1-Gang, Rectangular Cast Iron Box, Deep, Fully Adjustable, Single Service, Brass Top

Features

- Flush Concrete Rectangular Floorbox
- Single Gang Cast Iron
- 3.25" Minumim Depth of Pour
- Fully-Adjustable

Application

Single Service In-Floor Delivery Systems

General

Application - For Use On	Concrete
Color	<ul style="list-style-type: none"> • Brass Flange • Laiton
Construction	Case Iron
EU RoHS Indicator	No
Finish Type	Brass
Knockouts	4) 1"
Material	Cast Iron
Mounting Method	Cast Into Concrete
Number of Gang(s)	1-Gang
Series	Flush Rectangular - B24 Series
Size	2-Gang
Type	<ul style="list-style-type: none"> • 1-Gang Deep Rectangular Cast Iron Box • 1-Gang Deep Rectangular Cast Iron Box
UPC	783585100500

Dimensions

Dimensions	4.69 in x 4.69 in x 3.15 in
Height	3.15 in
Length	4.69 in
Width	4.69 in

Conductor Related

Cable Entry	From Top
-------------	----------

Certifications and Compliance

Industry Standard(s)	<ul style="list-style-type: none"> • UL/CSA • UL514
----------------------	---

Logistics

Carton Quantity	4
-----------------	---

Product Assets

- [Catalog Page - Wiring P-26 Catalog page](#)
- [Catalogs - WDK Catalog Full 2023](#)
- [Customer Notices - Prop 65 Notice](#)
- [Warranty - Industrial & Commercial Products](#)



A proud member of the Hubbell Family.