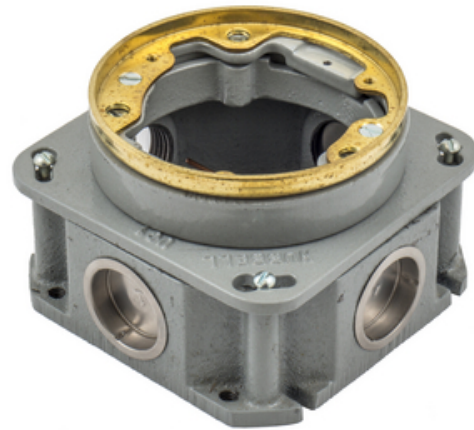




1-Gang, Round, Cast Iron Box, Deep, Fully Adjustable, Single Service, Brass Top

By Hubbell Wiring Device-Kellems
Catalog # [B253641](#)



Flush Concrete Floor Box Series, 1-Gang, Round, Cast Iron Box,
Deep, Fully Adjustable, Single Service, Brass Top

Application

Single Service In-Floor Delivery Systems

General

Application - For Use On	Concrete
Color	<ul style="list-style-type: none">Brass FlangeLaiton
Construction	Case Iron
EU RoHS Indicator	No
Knockouts	4) 1"
Material	Cast Iron
Mounting Method	Cast Into Concrete
Series	Flush Round - B25 Series
Type	<ul style="list-style-type: none">Round Cast Iron BoxRound Cast Iron Box
UPC	783585102108

Dimensions

Dimensions	4.84 in x 4.84 in x 3.06 in
Height	3.06 in
Length	4.84 in
Width	4.84 in

Conductor Related

Cable Entry	From Top
-------------	----------

Certifications and Compliance

Industry Standard(s)	<ul style="list-style-type: none">UL/CSAUL514
----------------------	--

Logistics

Carton Quantity	4
-----------------	---

Product Assets

[Catalogs - WDK Catalog Full 2023](#)
[Customer Notices - Prop 65 Notice](#)
[Warranty - Industrial & Commercial Products](#)



A proud member of the Hubbell Family.

©2024 Hubbell Incorporated. All rights reserved.
WDK_MX-B253641-SPEC-EN | REV 1/2024