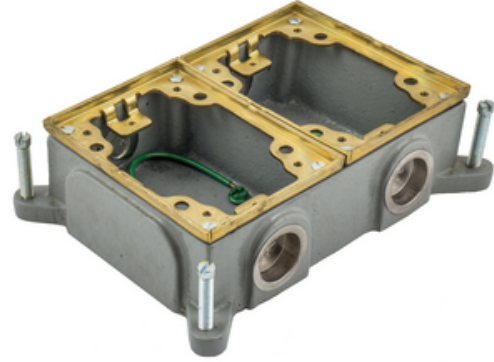




Wiring Device-Kellems

2-Gang, Rectangular, Cast Iron Box, Shallow, Semi Adjustable, Brass Top

By Hubbell Wiring Device-Kellems
Catalog # [B4214](#)



Flush Concrete Floor Box Series, 2-Gang, Rectangular, Cast Iron Box, Shallow, Semi Adjustable, Brass Top

Application

Multi Service In-Floor Delivery Systems

General

| | |
|--------------------------|--|
| Application - For Use On | Concrete |
| Color | Brass Flange |
| Construction | Case Iron |
| EU RoHS Indicator | No |
| Finish Type | Brass |
| Knockouts | 4) 3/4" |
| Material | Cast Iron |
| Mounting Method | Cast Into Concrete |
| Number of Gang(s) | 1-Gang |
| Series | Flush Rectangular - B24 Series |
| Size | 2-Gang |
| Type | 2-Gang Shallow Rectangular Cast Iron Box |
| UPC | 783585102504 |

Dimensions

| | |
|------------|--------------------------|
| Dimensions | 5.46 in x 4.19 in x 2 in |
| Height | 2 in |
| Length | 5.46 in |
| Width | 4.19 in |

Conductor Related

| | |
|-------------|----------|
| Cable Entry | From Top |
|-------------|----------|

Certifications and Compliance

| | |
|----------------------|---|
| Industry Standard(s) | <ul style="list-style-type: none"> UL/CSA UL514 |
|----------------------|---|

Logistics

| | |
|-----------------|---|
| Carton Quantity | 2 |
|-----------------|---|

Product Assets

- [Catalogs - WDK Catalog Full 2023](#)
- [Customer Notices - Prop 65 Notice](#)
- [Warranty - Industrial & Commercial Products](#)



A proud member of the Hubbell Family.