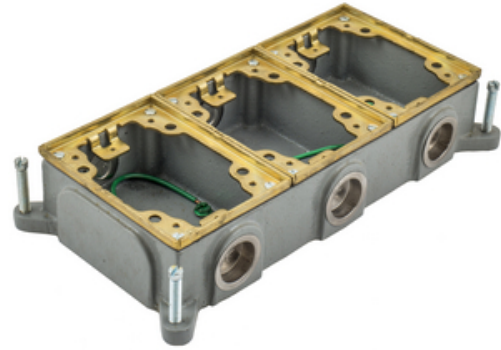




Wiring Device-Kellems

# 3-Gang, Rectangular, Cast Iron Box, Shallow, Semi Adjustable, Brass Top

By Hubbell Wiring Device-Kellems  
Catalog # [B4314](#)



Flush Concrete Floor Box Series, 3-Gang, Rectangular, Cast Iron Box, Shallow, Semi Adjustable, Brass Top

## Application

Multi Service In-Floor Delivery Systems

## General

Application - For Use On	Concrete
Color	<ul style="list-style-type: none"> <li>• Brass Flange</li> <li>• Laiton</li> </ul>
Construction	Case Iron
EU RoHS Indicator	No
Finish Type	Brass
Knockouts	6)3/4"
Material	Cast Iron
Mounting Method	Cast Into Concrete
Number of Gang(s)	3-Gang
Series	Flush Rectangular - B24 Series
Size	3-Gang
Type	<ul style="list-style-type: none"> <li>• 3-Gang Shallow Rectangular Cast Iron Box</li> <li>• 3-Gang Shallow Rectangular Cast Iron Box</li> </ul>
UPC	783585102900

## Dimensions

Dimensions	5.46 in x 10.7 in x 2 in
Height	2 in
Length	5.46 in
Width	10.7 in

## Conductor Related

Cable Entry	From Top
-------------	----------

## Certifications and Compliance

Industry Standard(s)	<ul style="list-style-type: none"> <li>• UL/CSA</li> <li>• UL514</li> </ul>
----------------------	---

## Product Assets

- [Catalogs - WDK Catalog Full 2023](#)
- [Customer Notices - Prop 65 Notice](#)
- [Warranty - Industrial & Commercial Products](#)



A proud member of the Hubbell Family.