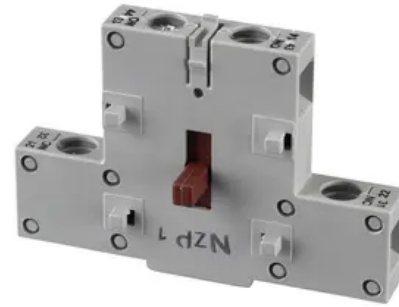


Industrial Grade, Disconnect Switches, Unfused Switch, Break after Main Break Auxiliary Contact, For 30A and 60A and 100A Pilot Duty.

By Hubbell Wiring Device-Kellems
Catalog # [HBLAC1](#)



Switches and Lighting Controls, Industrial Grade, Disconnect Switches, Unfused Switch, Break after Main Break Auxiliary Contact, For 30A and 60A and 100A Pilot Duty.

Features

- Industrial Grade Unfused Switch
- Break after Main Break Auxiliary Contact
- For 30A and 60A and 100A Pilot Duty.

Performance

- Electrical - Current Interrupting - Certified for current interrupting at full rated current voltage
- Electrical - Dielectric Voltage - Withstands 3,000V Min
- Electrical - Max. Working Voltage - 600V RMS
- Electrical - Operations - Mechanical 10,000 cycles
- Electrical 6,000 cycles
- Environmental - Flammability - Meets UL 94V0 material classification
- Environmental - Moisture Resistance - IP66 suitability
- Environmental - Operating Temperature - Maximum continuous +75°C Minimum continuous -40°C
- Environmental - UV Resistance - All exposed materials are UV stabilized
- Mechanical - Impact Resistance - In accordance with UL 746C
- Mechanical - Mounting - External full adjustable feet
- Mechanical - Product Identification - Identification and ratings are part of the external label and receptacle face
- Mechanical - Terminal Identification - In accordance with UL, CSA

General

Catalog Number	HBLAC1
EU RoHS Indicator	No
Item Type	Switched Enclosure Auxiliary Contact

Operating Temperature

Maximum continuous 75°C and minimum -40°C without Impact
Non-Fused; Fused
Auxiliary Contacts
Accessories
783585955117

Series
Style
Type
UPC

Dimensions

Weight 0.1 lb

Electrical Ratings

Dielectric Strength Withstands 3,000V minimum

Certifications And Compliance

Industry Standard(s)

- Certified to CSA Standard
- Listed to UL Standard
- Type 3R and 12K Enclosure Rating

Standards - RoHS Compliance CM
Status

Logistics

Carton Quantity 50
Pallet Quantity 4750

Product Assets

[Catalogs - WDK Catalog Full 2024](#)
[Specifications - HBLAC1](#)
[Warranty - Industrial & Commercial Products](#)