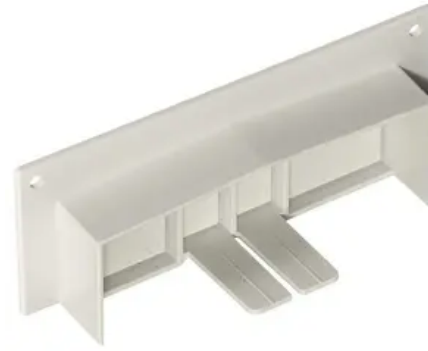


Non-Metallic Raceway, BaseTrak Series, 2/3 Channel Surface Panel Connector

By Hubbell Wiring Device-Kellems
Catalog # [PB3SPCA](#)



Non-Metallic Raceway, BaseTrak Series, 2/3 Channel Surface Panel Connector

Features

- For connecting PB3 Raceway with surface type panel boxes

Application

Surface Panel Connector

Performance

- Environmental - Flame Rating - UL94V-0
- Environmental - Temperature Range - -25.6° to 158° F

General

Catalog Number	PB3SPCA
Color	Office White
Cover Type	Removable
EU RoHS Indicator	Contact Manufacturer
Item Type	PB2 and PB3 BaseTrak Series
Material	Non-Metallic
Series	<ul style="list-style-type: none">• PB2• PB3

Specifications

Style
Sub Brand
Type
UPC

- Crush Resistance - 300 lbs.
 - Impact Resistance - 5 ft. lbs.
 - Material - UV Stabilized PVC
- Connector
Non-Metallic Raceway
Miscellaneous Fittings
783585310145

Certifications And Compliance

Industry Standard(s) UL 5A
Standards - RoHS Compliance CM
Status

Logistics

Carton Quantity 10

Product Assets

[Catalogs - WDK Catalog Full 2024](#)
[Specifications - PB3SPCA](#)
[Warranty - Industrial & Commercial Products](#)