

Non-Metallic Raceway, PolyTrak Series, PolyTrak Box, 1-Gang, 2.44" Deep

By Hubbell Wiring Device-Kellems
Catalog # [PDB12D](#)

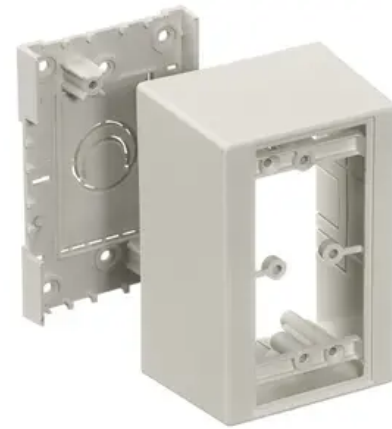
Non-Metallic Raceway, PolyTrak Series, PolyTrak Box, 1-Gang, 2.44" Deep

Performance

- Environmental - Flame Rating - UL94V-0
- Environmental - Temperature Range - -25.6° to 158° F

General

Catalog Number	PDB12D
Color	Office White
EU RoHS Indicator	Contact Manufacturer
Item Type	PW2 WallTrak, PL1 LANTrak and PP1 PremiseTrak (Latching) Series
Number of Gang(s)	1-Gang
Series	<ul style="list-style-type: none">• PP1• PL1• PW2
Specifications	<ul style="list-style-type: none">• Crush Resistance - 300 lbs.• Impact Resistance - 5 ft. lbs.• Material - UV Stabilized PVC• Style - 1-Gang



Style	Deep
Type	Boxes
UPC	783585090375

Certifications And Compliance

Industry Standard(s)	<ul style="list-style-type: none">• CSA Standard C22.2 no. 62• E118895 / E119190• UL Standard UL 5A
Standards - RoHS Compliance Status	CM

Logistics

Carton Quantity	5
-----------------	---

Product Assets

- [Catalogs - WDK Catalog Full 2024](#)
- [Specifications - PDB12D](#)
- [Warranty - Industrial & Commercial Products](#)